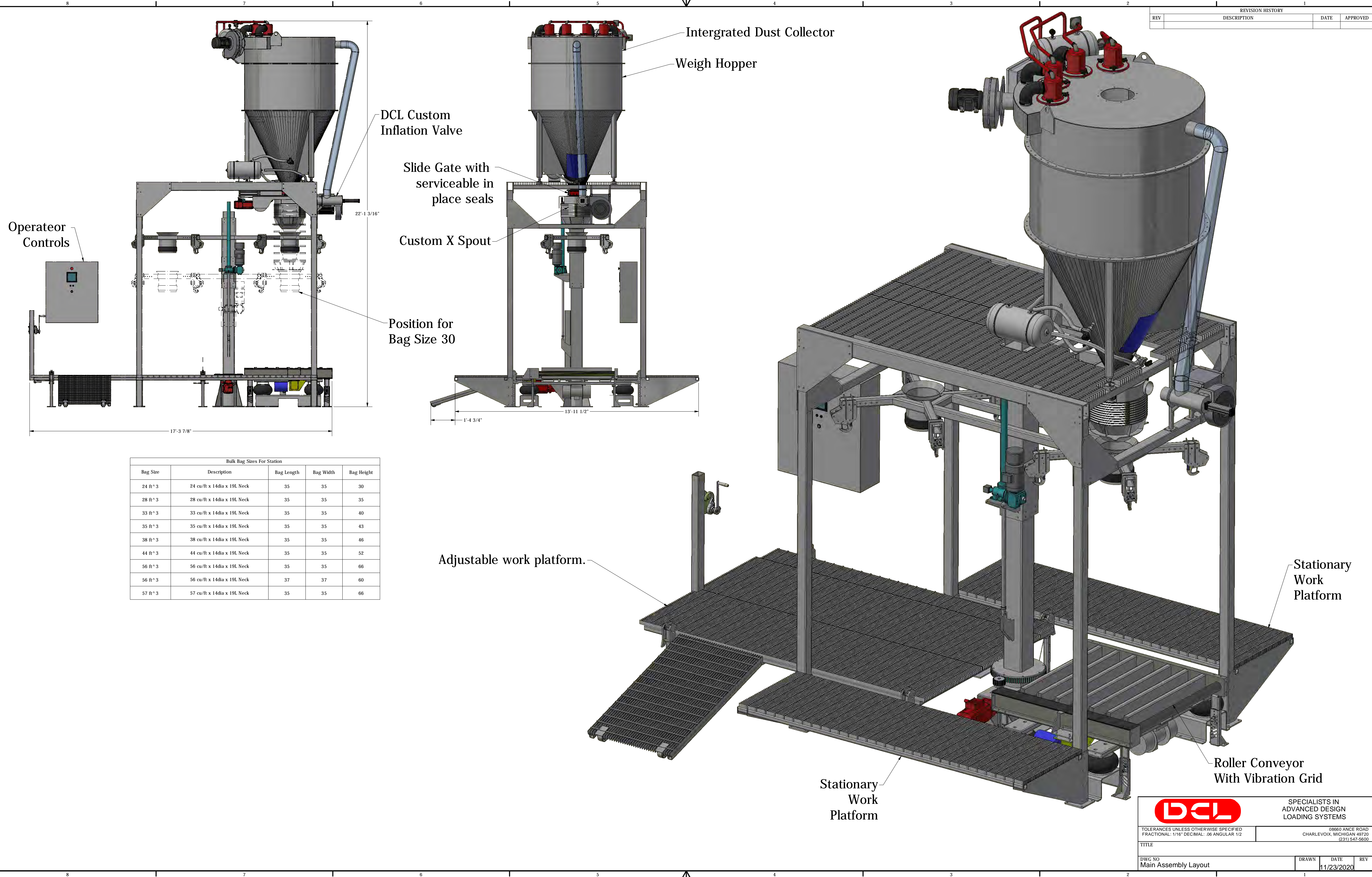



REVISION HISTORY			
REV	DESCRIPTION	DATE	APPROVED



Bulk Bag Sizes For Station				
Bag Size	Description	Bag Length	Bag Width	Bag Height
24 ft^3	24 cu/ft x 14dia x 19L Neck	35	35	30
28 ft^3	28 cu/ft x 14dia x 19L Neck	35	35	35
33 ft^3	33 cu/ft x 14dia x 19L Neck	35	35	40
35 ft^3	35 cu/ft x 14dia x 19L Neck	35	35	43
38 ft^3	38 cu/ft x 14dia x 19L Neck	35	35	46
44 ft^3	44 cu/ft x 14dia x 19L Neck	35	35	52
56 ft^3	56 cu/ft x 14dia x 19L Neck	35	35	66
56 ft^3	56 cu/ft x 14dia x 19L Neck	37	37	60
57 ft^3	57 cu/ft x 14dia x 19L Neck	35	35	66



**SPECIALISTS IN  
ADVANCED DESIGN  
LOADING SYSTEMS**

TOLERANCES UNLESS OTHERWISE SPECIFIED  
FRACTIONAL: 1/16" DECIMAL: .06 ANGULAR: 1/2"

08660 ANCE ROAD  
CHARLEVOIX, MICHIGAN 49720  
(231) 547-5600

TITLE		DATE		REV	
DWG NO Main Assembly Layout		DRAWN	DATE	REV	
			11/23/2020		