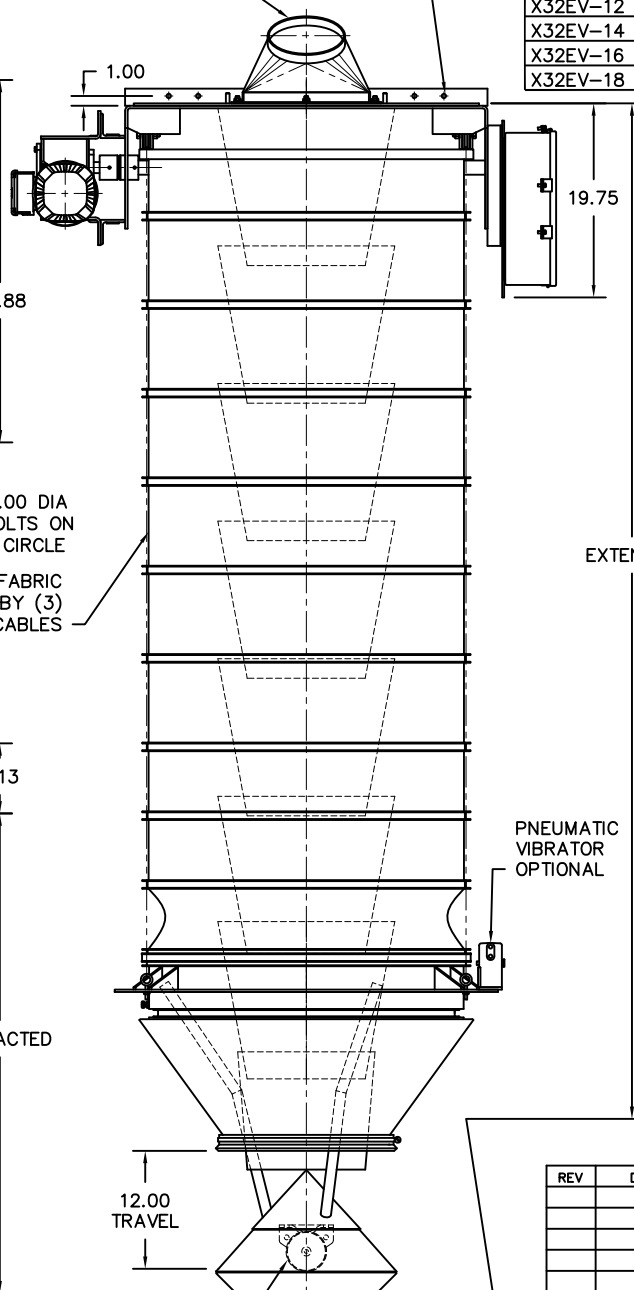


TOP DUST OUTLET  
7.88 DIA COLLAR  
CAN BE ROTATED  
IN 30° INCREMENTS

(4) 0.44 DIA  
MOUNTING HOLES



MODEL	TRAVEL	RETR	EXTD	URE WGT	STL WGT	URE HP	STL HP
X32EV-04	48.00	46.50	94.50	865 LB*	975 LB*	1 HP/B	1 HP/B
X32EV-06	72.00	49.25	121.25	898 LB*	1063 LB*	1 HP/B	1 HP/B
X32EV-08	96.00	52.38	148.38	931 LB*	1151 LB*	1 HP/B	1.5 HP/B
X32EV-10	120.00	55.00	175.00	964 LB*	1239 LB*	1 HP/B	1.5 HP/B
X32EV-12	144.00	57.63	201.63	998 LB*	1328 LB*	1 HP/B	2 HP/B
X32EV-14	168.00	60.25	228.25	1031 LB*	1416 LB*	1.5 HP/B	2 HP/B
X32EV-16	192.00	62.88	254.88	1062 LB*	1504 LB*	1.5 HP/B	1.5 HP/D
X32EV-18	216.00	65.50	281.50	1096 LB*	1591 LB*	1.5 HP/B	1.5 HP/D

**GENERAL NOTES:**

LOADING CAPACITY: 450 CFM  
AVERAGE AIR WITHDRAWAL: 1400 TO 1800 CFM  
LIFTING SPEED: 16 FPM AVG

ALL INDUSTRIAL VOLTAGES ARE AVAILABLE FOR ELECTRICAL COMPONENTS.

PREWIRING OF ELECTRICAL COMPONENTS TO SPOUT FRAME JUNCTION BOX OPTIONAL.

ELECTRICAL ENCLOSURES NEMA 4 STANDARD. NEMA 4X, 7, AND 9 OPTIONAL.

COLLAPSIBLE FABRIC SLEEVE CAN BE CONSTRUCTED OF URETHANE/NYLON, HYPALON/NYLON, OR A NUMBER OF OTHER FABRICS. SLEEVES COME STANDARD WITH ALUMINUM OUTER AND INNER RINGS STANDARD.

METAL SURFACES ARE POWER TOOL CLEANED, PRIMED, AND FINISHED WITH INDUSTRIAL ENAMEL.

LOADING CAPACITY LISTED IS APPROXIMATE AND BASED ON FREE FLOWING PRODUCTS. CONSULT DCL FOR ACTUAL REQUIREMENTS.

AIR WITHDRAWAL REQUIREMENTS ARE AVERAGE. CONSULT DCL FOR FINAL RECOMMENDATIONS.

SPECIFICATIONS AND/OR DIMENSIONAL DATA ARE SUBJECT TO CHANGE. CONSULT DCL FOR CERTIFIED DRAWINGS.

CONE CONSTRUCTION NOTES: CONTAINED INNER DESIGN STANDARD WITH 0.13 AR STEEL, AND 0.13 304 OR 316 STAINLESS STEEL. OTHER MATERIALS AVAILABLE TO SUIT APPLICATION.

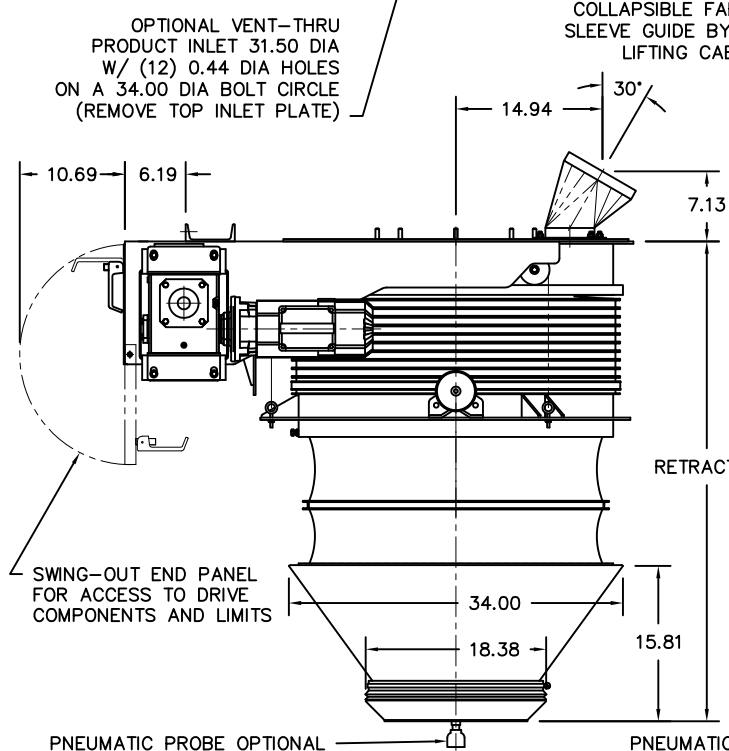
**OPTIONS:**

150# INLET FLANGE. ADDS 3.00 TO RETRACTED HEIGHT.

LEVEL SENSORS; TILT PROBE, RF PROBE, CAPACITANCE PROBE, PNEUMATIC PROBE.

AIR VIBRATOR KIT REQUIRES (40) CFM @ (80) PSI.

\*ESTIMATED WEIGHTS DO NOT INCLUDE OPTIONAL EQUIPMENT OR ELECTRICAL COMPONENTS.



EXTENDED

PNEUMATIC VIBRATOR OPTIONAL

RETRACTED

12.00 TRAVEL

REV	DATE	BY

**SPECIALISTS IN  
ADVANCED DESIGN  
LOADING SYSTEMS**

P.O. BOX 125  
CHARLEVOIX, MICHIGAN 49720  
(231) 547-5600

TOLERANCES UNLESS OTHERWISE SPECIFIED		DRAWN BY: JNM	SCALE: NONE
FRACTIONAL: 1/16"	DECIMAL: .06	CHECKED BY: ENG	DATE: 03-16-18
ANGULAR: 1/2		TITLE: X32EV LOADING SPOUT (SELF SEALING)	
DRAWING No: X32EV-10002			