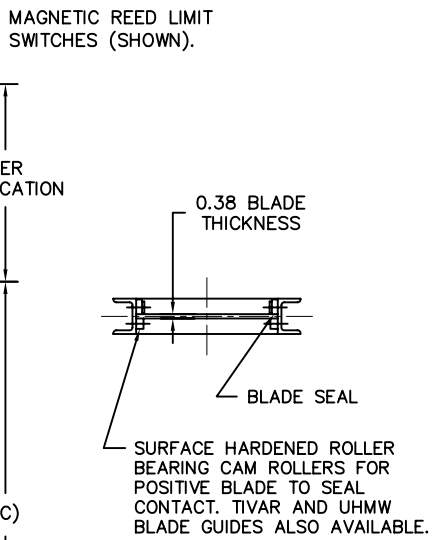
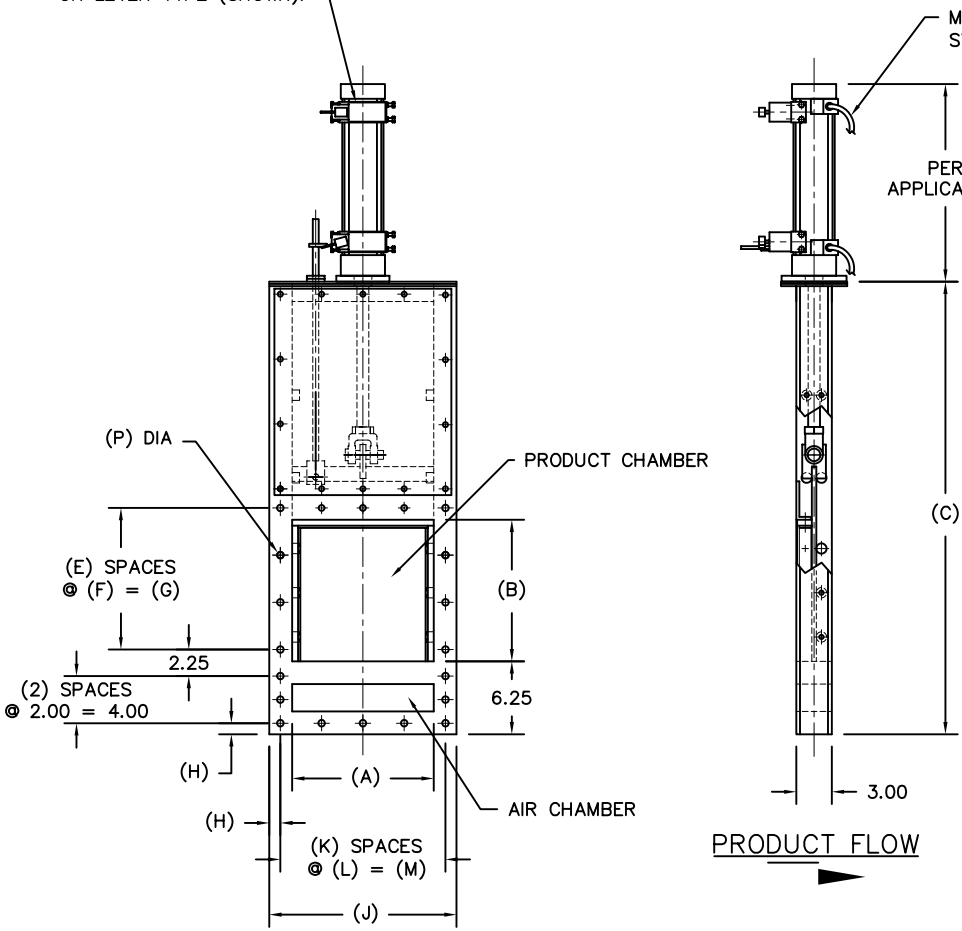


MODEL	A	B	C	E	F	G	H	J	K	L	M	P	EST WGT
VSGH6X4	6.00	4.00	22.44	1	4.00	4.00	1.00	10.00	2	4.00	8.00	0.56	59 LB*
VSGH8X6	8.00	6.00	26.44	2	3.00	6.00	1.00	12.00	2	5.00	10.00	0.56	82 LB*
VSGH10X6	10.00	6.00	26.44	2	3.00	6.00	1.00	14.00	3	4.00	12.00	0.56	86 LB*
VSGH12X8	12.00	8.00	30.44	2	4.00	8.00	1.00	16.00	4	3.50	14.00	0.56	107 LB*
VSGH14X8	14.00	8.00	30.44	2	4.00	8.00	1.00	18.00	4	4.00	16.00	0.56	130 LB*
VSGH16X10	16.00	10.00	34.44	2	5.00	10.00	1.00	20.00	4	4.50	18.00	0.56	143 LB*
VSGH18X10	18.00	10.00	34.44	2	5.00	10.00	1.00	22.00	4	5.00	20.00	0.56	164 LB*
VSGH20X12	20.00	12.00	38.44	3	4.00	12.00	1.00	24.00	4	5.50	22.00	0.56	186 LB*
VSGH22X12	22.00	12.00	38.44	3	4.00	12.00	1.00	26.00	4	6.00	24.00	0.56	194 LB*
VSGH24X14	24.00	14.00	42.44	4	3.50	14.00	1.00	28.00	4	6.50	26.00	0.56	226 LB*

FULL-OPEN AND FULL-CLOSED
LIMIT SWITCHES OPTIONAL.
MAGNETIC REED TYPE
OR LEVER TYPE (SHOWN).



GATE CROSS SECTION

GENERAL NOTES:

- FRAME CONSTRUCTION IS 0.19 FORMED PLATE. STAINLESS STEEL CONSTRUCTION IS OPTIONAL.
- GATE BLADE CONSTRUCTION IS MILD STEEL. ABRASION RESISTANT OR STAINLESS STEEL IS OPTIONAL.
- BLADE SEALS ARE 3M WIPER BAR.
- DUST TIGHT TRANSITION IS A RECOMMENDED OPTION ON ALL GATE ASSEMBLIES. ONE TRANSITION IS PROVIDED WHEN MAINTENANCE GATE IS MOUNTED TO POWER GATE.
- OPTIONAL DUST TIGHT TRANSITION CONSTRUCTION IS MILD STEEL. ABRASION RESISTANT OR STAINLESS STEEL IS OPTIONAL. TRANSITION DIMENSIONS CAN BE VARIED TO SUIT APPLICATION.
- METAL SURFACES ARE POWER TOOL CLEANED, PRIMED, AND FINISHED WITH INDUSTRIAL ENAMEL.
- FULL-OPEN AND FULL-CLOSED LIMIT SWITCHES ARE OPTIONAL, AND ARE AVAILABLE IN NEMA 4, 4X, 7, AND 9.
- BORE SIZE AND LENGTH OF ACTUATOR TO BE DETERMINED UPON APPLICATION.
- VARIOUS HYDRAULIC POWER AND CONTROL UNITS AVAILABLE TO SUIT APPLICATION.
- SPECIFICATIONS AND/OR DIMENSIONAL DATA ARE SUBJECT TO CHANGE. CONSULT DCL FOR CERTIFIED DRAWINGS.
- *ESTIMATED WEIGHTS DO NOT INCLUDE ACTUATOR OR ELECTRICAL COMPONENTS.

REV	DATE	BY	DCL		SPECIALISTS IN ADVANCED DESIGN LOADING SYSTEMS		P.O. BOX 125 CHARLEVOIX, MICHIGAN 49720 (231) 547-5600	
			TOLERANCES UNLESS OTHERWISE SPECIFIED		FRACTIONAL 1/16"		DECIMAL .06	
			ANGULAR 1/2		DRAWN BY: TLC		SCALE: NONE	
					CHECKED BY: ENG		DATE: 10-06-92	
A	02-21-02	TLC	TITLE: VSG VERTICAL SLIDE GATE (LOW TOP)				DRAWING No: VSGH-10001	