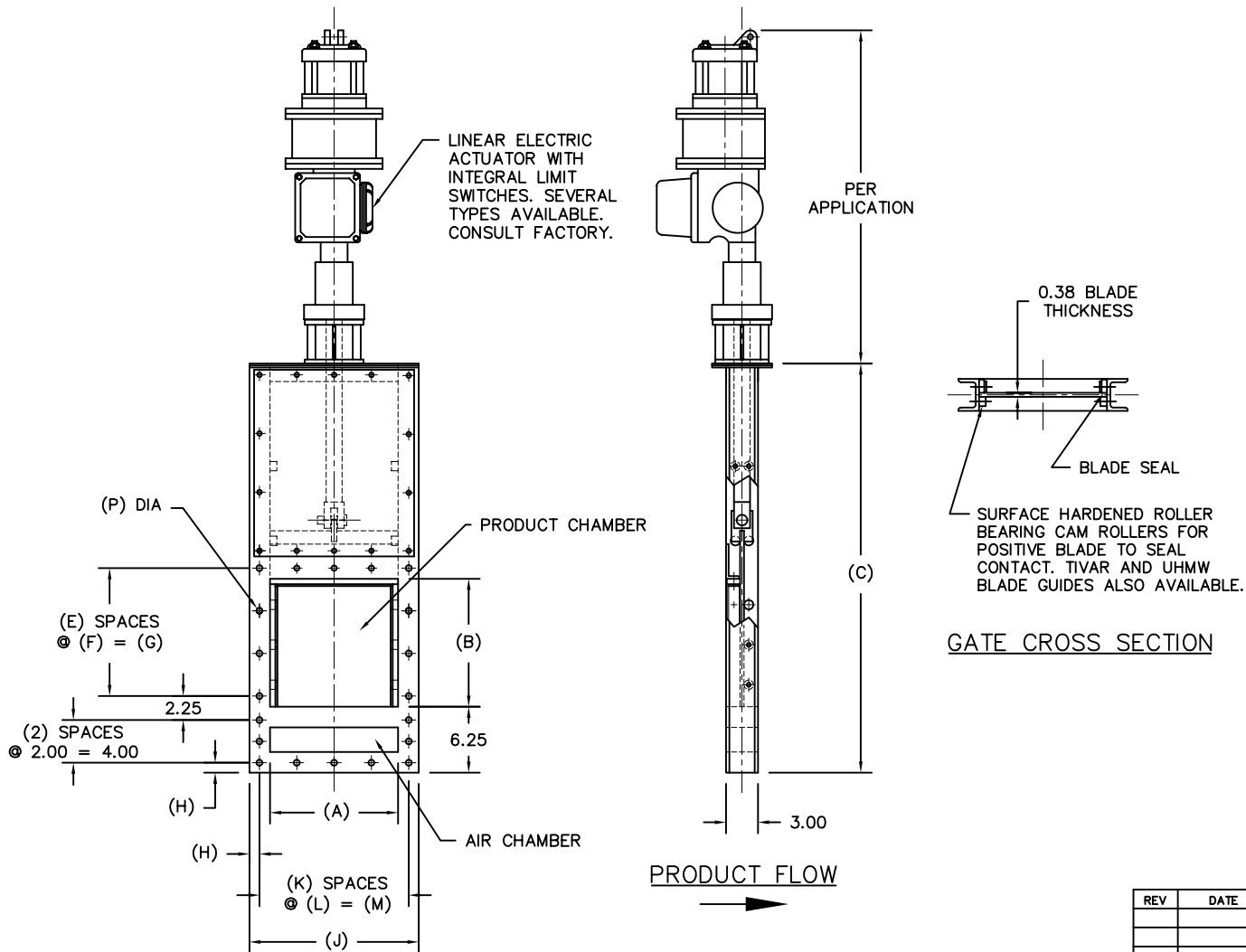


MODEL	A	B	C	E	F	G	H	J	K	L	M	P	EST WGT
VSGE6X4	6.00	4.00	22.44	1	4.00	4.00	1.00	10.00	2	4.00	8.00	0.56	59 LB*
VSGE8X6	8.00	6.00	26.44	2	3.00	6.00	1.00	12.00	2	5.00	10.00	0.56	82 LB*
VSGE10X6	10.00	6.00	26.44	2	3.00	6.00	1.00	14.00	3	4.00	12.00	0.56	86 LB*
VSGE12X8	12.00	8.00	30.44	2	4.00	8.00	1.00	16.00	4	3.50	14.00	0.56	107 LB*
VSGE14X8	14.00	8.00	30.44	2	4.00	8.00	1.00	18.00	4	4.00	16.00	0.56	130 LB*
VSGE16X10	16.00	10.00	34.44	2	5.00	10.00	1.00	20.00	4	4.50	18.00	0.56	143 LB*
VSGE18X10	18.00	10.00	34.44	2	5.00	10.00	1.00	22.00	4	5.00	20.00	0.56	164 LB*
VSGE20X12	20.00	12.00	38.44	3	4.00	12.00	1.00	24.00	4	5.50	22.00	0.56	186 LB*
VSGE22X12	22.00	12.00	38.44	3	4.00	12.00	1.00	26.00	4	6.00	24.00	0.56	194 LB*
VSGE24X14	24.00	14.00	42.44	4	3.50	14.00	1.00	28.00	4	6.50	26.00	0.56	226 LB*



GENERAL NOTES:

FRAME CONSTRUCTION IS 0.19 FORMED PLATE.
STAINLESS STEEL CONSTRUCTION IS OPTIONAL.

GATE BLADE CONSTRUCTION IS MILD STEEL.
ABRASION RESISTANT OR STAINLESS STEEL IS OPTIONAL.

BLADE SEALS ARE 3M WIPER BAR.

DUST TIGHT TRANSITION IS A RECOMMENDED OPTION
ON ALL GATE ASSEMBLIES. ONE TRANSITION IS PROVIDED
WHEN MAINTENANCE GATE IS MOUNTED TO POWER GATE.

OPTIONAL DUST TIGHT TRANSITION CONSTRUCTION IS
MILD STEEL. ABRASION RESISTANT OR STAINLESS STEEL
IS OPTIONAL. TRANSITION DIMENSIONS CAN BE VARIED
TO SUIT APPLICATION.

METAL SURFACES ARE POWER TOOL CLEANED, PRIMED,
AND FINISHED WITH INDUSTRIAL ENAMEL.

ELECTRIC ACTUATOR WITH INTEGRAL LIMIT SWITCHES
AVAILABLE IN NEMA 4, 4X, 7, AND 9.

INTERMEDIATE LIMIT SWITCHES, POSITION FEEDBACK,
OR CONTINUOUS POSITIONING CONTROL ARE OPTIONAL.

CAPACITY AND LENGTH OF ACTUATOR TO BE DETERMINED
UPON APPLICATION.

SPECIFICATIONS AND/OR DIMENSIONAL DATA ARE SUBJECT
TO CHANGE. CONSULT DCL FOR CERTIFIED DRAWINGS.

*ESTIMATED WEIGHTS DO NOT INCLUDE ACTUATOR
OR ELECTRICAL COMPONENTS.

REV	DATE	BY	DCL		SPECIALISTS IN ADVANCED DESIGN LOADING SYSTEMS		P.O. BOX 125 CHARLEVOIX, MICHIGAN 49720 (231) 547-5600		
			TOLERANCES UNLESS OTHERWISE SPECIFIED		FRACTIONAL 1/16"		DECIMAL .06		
			ANGULAR 1/2		DRAWN BY: TLC		SCALE: NONE		
			CHECKED BY: ENG		DATE: 10-06-92		DRAWING No: VSGE-10001		
A	02-21-02	TLC	TITLE: VSG VERTICAL SLIDE GATE (LOW TOP)						