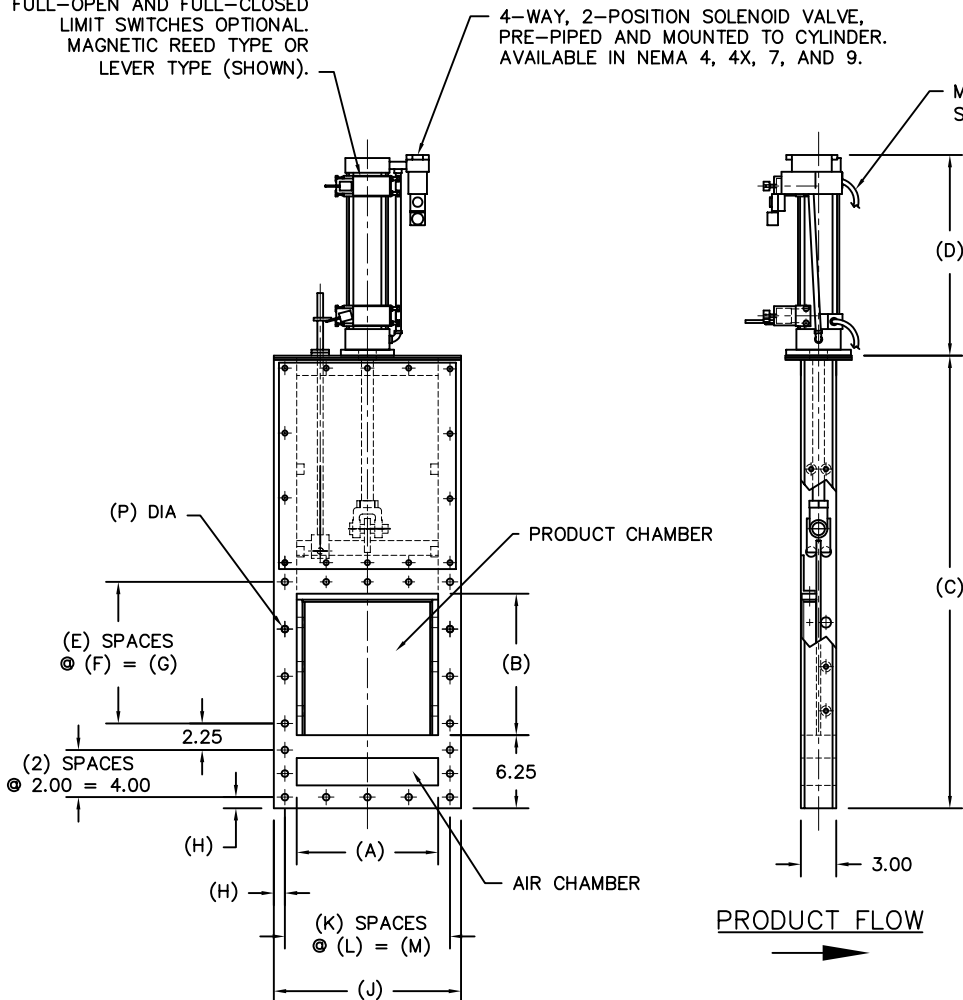


MODEL	A	B	C	D	E	F	G	H	J	K	L	M	P	EST WGT
VSGA6X4	6.00	4.00	22.44	8.63	1	4.00	4.00	1.00	10.00	2	4.00	8.00	0.56	59 LB*
VSGA8X6	8.00	6.00	26.44	10.63	2	3.00	6.00	1.00	12.00	2	5.00	10.00	0.56	82 LB*
VSGA10X6	10.00	6.00	26.44	10.63	2	3.00	6.00	1.00	14.00	3	4.00	12.00	0.56	86 LB*
VSGA12X8	12.00	8.00	30.44	12.63	2	4.00	8.00	1.00	16.00	4	3.50	14.00	0.56	107 LB*
VSGA14X8	14.00	8.00	30.44	12.63	2	4.00	8.00	1.00	18.00	4	4.00	16.00	0.56	130 LB*
VSGA16X10	16.00	10.00	34.44	14.63	2	5.00	10.00	1.00	20.00	4	4.50	18.00	0.56	143 LB*
VSGA18X10	18.00	10.00	34.44	14.63	2	5.00	10.00	1.00	22.00	4	5.00	20.00	0.56	164 LB*
VSGA20X12	20.00	12.00	38.44	16.63	3	4.00	12.00	1.00	24.00	4	5.50	22.00	0.56	186 LB*
VSGA22X12	22.00	12.00	38.44	16.63	3	4.00	12.00	1.00	26.00	4	6.00	24.00	0.56	194 LB*
VSGA24X14	24.00	14.00	42.44	18.63	4	3.50	14.00	1.00	28.00	4	6.50	26.00	0.56	226 LB*

FULL-OPEN AND FULL-CLOSED LIMIT SWITCHES OPTIONAL. MAGNETIC REED TYPE OR LEVER TYPE (SHOWN).

4-WAY, 2-POSITION SOLENOID VALVE, PRE-PIPED AND MOUNTED TO CYLINDER. AVAILABLE IN NEMA 4, 4X, 7, AND 9.

MAGNETIC REED LIMIT SWITCHES (SHOWN).



0.38 BLADE THICKNESS



BLADE SEAL

SURFACE HARDENED ROLLER BEARING CAM ROLLERS FOR POSITIVE BLADE TO SEAL CONTACT. TIVAR AND UHMW BLADE GUIDES ALSO AVAILABLE.

GATE CROSS SECTION

GENERAL NOTES:

FRAME CONSTRUCTION IS 0.19 FORMED PLATE. STAINLESS STEEL CONSTRUCTION IS OPTIONAL.

GATE BLADE CONSTRUCTION IS MILD STEEL. ABRASION RESISTANT OR STAINLESS STEEL IS OPTIONAL.

BLADE SEALS ARE 3M WIPER BAR.

DUST TIGHT TRANSITION IS A RECOMMENDED OPTION ON ALL GATE ASSEMBLIES. ONE TRANSITION IS PROVIDED WHEN MAINTENANCE GATE IS MOUNTED TO POWER GATE.

OPTIONAL DUST TIGHT TRANSITION CONSTRUCTION IS MILD STEEL. ABRASION RESISTANT OR STAINLESS STEEL IS OPTIONAL. TRANSITION DIMENSIONS CAN BE VARIED TO SUIT APPLICATION.

METAL SURFACES ARE POWER TOOL CLEANED, PRIMED, AND FINISHED WITH INDUSTRIAL ENAMEL.

FULL-OPEN AND FULL-CLOSED LIMIT SWITCHES ARE OPTIONAL, AND ARE AVAILABLE IN NEMA 4, 4X, 7, AND 9.

BORE SIZE OF ACTUATOR TO BE DETERMINED UPON APPLICATION.

SPECIFICATIONS AND/OR DIMENSIONAL DATA ARE SUBJECT TO CHANGE. CONSULT DCL FOR CERTIFIED DRAWINGS.

*ESTIMATED WEIGHTS DO NOT INCLUDE ACTUATOR OR ELECTRICAL COMPONENTS.

REV	DATE	BY	DCL		SPECIALISTS IN ADVANCED DESIGN LOADING SYSTEMS		P.O. BOX 125 CHARLEVOIX, MICHIGAN 49720 (231) 547-5600	
			TOLERANCES UNLESS OTHERWISE SPECIFIED		DRAWN BY: TLC		SCALE: NONE	
			FRACTIONAL: 1/16" DECIMAL: .06 ANGULAR: 1/2		CHECKED BY: ENG		DATE: 10-06-92	
A	02-21-02	TLC	TITLE: VSG VERTICAL SLIDE GATE (LOW TOP)				DRAWING No: VSGA-10001	