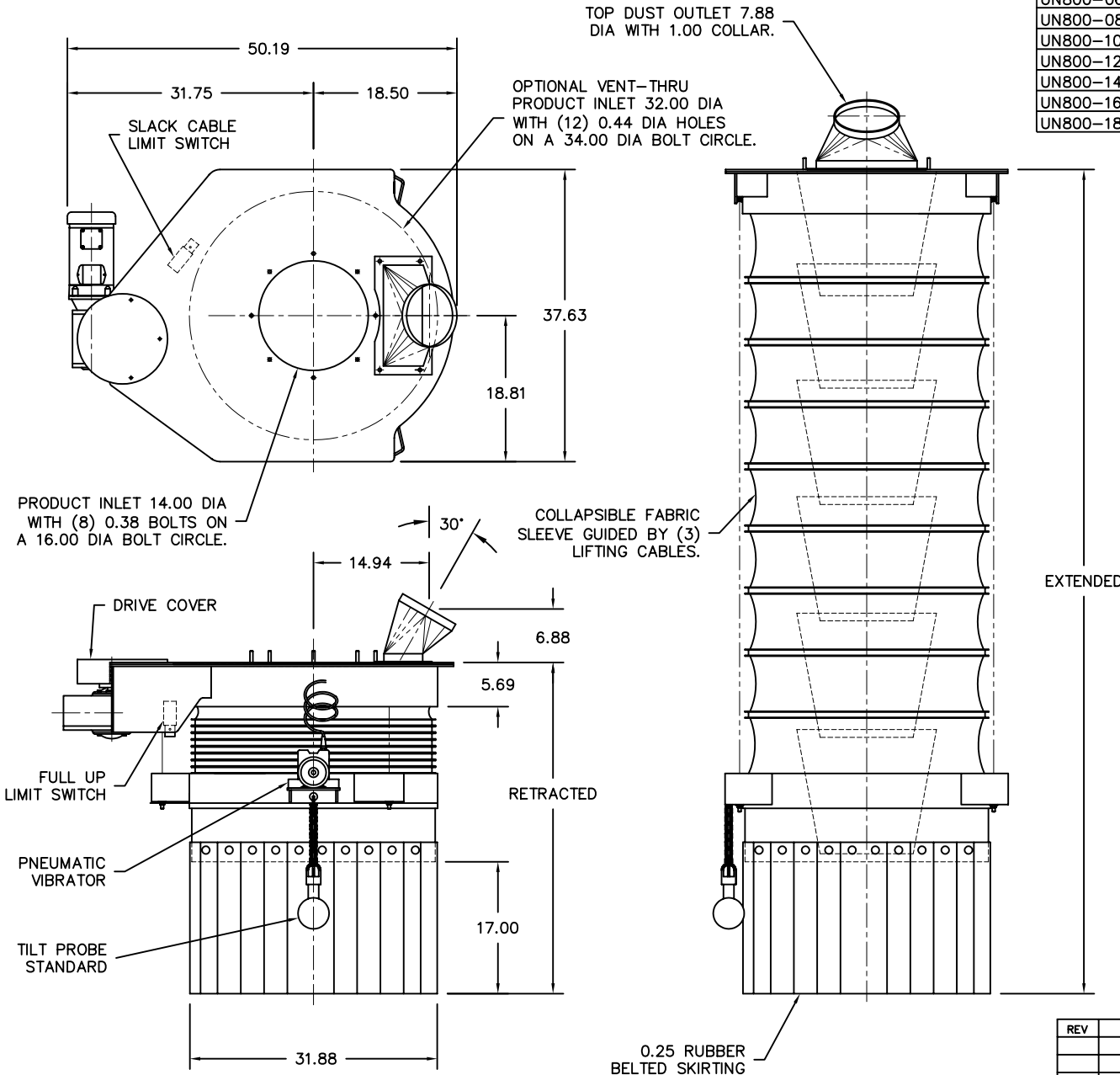


MODEL	TRAVEL	RETR	EXTD	URE WGT	STL WGT	URE HP	STL HP
UN800-02	24.00	35.75	59.75	655 LB	698 LB	1 HP/B	1 HP/B
UN800-04	48.00	38.50	86.50	688 LB	774 LB	1 HP/B	1 HP/B
UN800-06	72.00	41.50	113.50	721 LB	850 LB	1 HP/B	1 HP/B
UN800-08	96.00	44.00	140.00	758 LB	929 LB	1 HP/B	1.5 HP/B
UN800-10	120.00	45.38	165.38	785 LB	979 LB	1 HP/B	1.5 HP/B
UN800-12	144.00	48.13	192.13	818 LB	1055 LB	1 HP/B	2 HP/B
UN800-14	168.00	50.88	218.88	855 LB	1134 LB	1.5 HP/B	2 HP/B
UN800-16	192.00	53.63	245.63	889 LB	1211 LB	1.5 HP/B	1.5 HP/D
UN800-18	216.00	55.00	271.00	916 LB	1259 LB	1.5 HP/B	1.5 HP/D



**GENERAL NOTES:**

LOADING CAPACITY: 450 CFM  
 AVERAGE AIR WITHDRAWAL: 1400 TO 1800 CFM  
 LIFTING SPEED: 16 FPM

ALL INDUSTRIAL VOLTAGES ARE AVAILABLE FOR ELECTRICAL COMPONENTS.

PREWIRING OF ELECTRICAL COMPONENTS TO SPOUT FRAME JUNCTION BOX OPTIONAL.

ELECTRICAL ENCLOSURES NEMA 4 STANDARD. NEMA 4X, 7, AND 9 OPTIONAL.

COLLAPSIBLE FABRIC SLEEVE CAN BE CONSTRUCTED OF URETHANE/NYLON, HYPALON/NYLON, OR A NUMBER OF OTHER FABRICS. SLEEVES COME STANDARD WITH ALUMINUM OUTER AND INNER RINGS.

METAL SURFACES POWER TOOL CLEANED, PRIMED, AND FINISHED WITH INDUSTRIAL ENAMEL.

LOADING CAPACITY LISTED IS APPROXIMATE AND BASED ON FREE FLOWING PRODUCTS. CONSULT DCL FOR ACTUAL REQUIREMENTS.

AIR WITHDRAWAL REQUIREMENTS ARE AVERAGE. CONSULT DCL FOR FINAL RECOMMENDATIONS.

CONE CONSTRUCTION NOTES: CONTAINED INNER DESIGN STANDARD WITH 0.13 AR STEEL, AND 0.13 304 OR 316 STAINLESS STEEL. OTHER MATERIALS AVAILABLE TO SUIT APPLICATION.

SPECIFICATIONS AND/OR DIMENSIONAL DATA ARE SUBJECT TO CHANGE. CONSULT DCL FOR CERTIFIED DRAWINGS.

**OPTIONS:**

150# INLET FLANGE. ADDS 3.00 TO RETRACTED HEIGHT.

LEVEL SENSORS; TILT PROBE, RF PROBE, CAPACITANCE PROBE, PNEUMATIC PROBE.

AIR VIBRATOR KIT REQUIRES (40) CFM @ (80) PSI.

REV	DATE	BY	DCL		SPECIALISTS IN ADVANCED DESIGN LOADING SYSTEMS		P.O. BOX 125 CHARLEVOIX, MICHIGAN 49720 (231) 547-5800	
			TOLERANCES UNLESS OTHERWISE SPECIFIED		DRAWN BY: JNM		SCALE: NONE	
			FRACTIONAL: 1/16" DECIMAL: .06 ANGULAR: 1/2		CHECKED BY: ENG		DATE: 01-04-98	
B	09-25-07	JNM	TITLE		DRAWING No:		UN800-10003	
A	09-27-00	JNM	UN800 LOADING SPOUT (OV STYLE)					