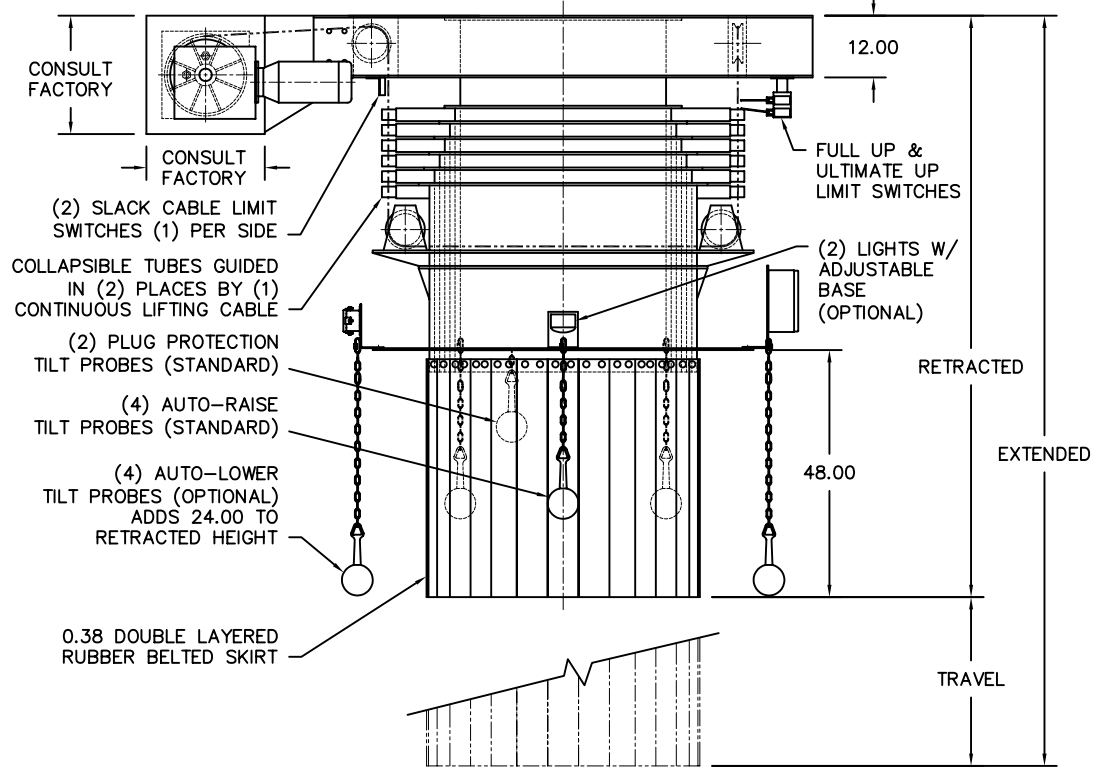


MODEL	TRAVEL	RETR	EXTD	DRIVE HP	A	B	C	D	E	EST WGT
TS40-08	96.00	186.00	282.00	1.5 HP/B	76.88	97.00	37.00	44.00	46.00	C/F
TS40-16	192.00	190.00	382.00	3 HP/B	76.88	97.00	37.00	44.00	46.00	C/F
TS40-24	288.00	194.00	482.00	5 HP/B	76.88	97.00	37.00	44.00	46.00	C/F
TS40-32	384.00	198.00	582.00	7.5 HP/B	76.88	97.00	37.00	44.00	46.00	C/F
TS40-40	480.00	202.00	682.00	10 HP/B	76.88	97.00	37.00	44.00	46.00	C/F
TS40-48	576.00	206.00	782.00	10 HP/B	76.88	97.00	37.00	44.00	46.00	C/F
TS40-56	672.00	210.00	882.00	15 HP/B	C/F	C/F	C/F	C/F	C/F	C/F
TS40-64	768.00	214.00	982.00	15 HP/B	C/F	C/F	C/F	C/F	C/F	C/F
TS40-72	864.00	218.00	1082.00	20 HP/B	C/F	C/F	C/F	C/F	C/F	C/F
TS40-80	960.00	222.00	1182.00	20 HP/B	C/F	C/F	C/F	C/F	C/F	C/F
TS40-88	1056.00	226.00	1282.00	20 HP/B	C/F	C/F	C/F	C/F	C/F	C/F
TS40-96	1152.00	230.00	1382.00	20 HP/B	C/F	C/F	C/F	C/F	C/F	C/F

GENERAL NOTES:

- LOADING CAPACITY: 3000 CFM
- LIFTING SPEED: 16 FPM AVERAGE
- ALL INDUSTRIAL VOLTAGES ARE AVAILABLE FOR ELECTRICAL COMPONENTS.
- PREWIRING OF ELECTRICAL COMPONENTS TO SPOUT FRAME JUNCTION BOX OPTIONAL.
- ELECTRICAL ENCLOSURES NEMA 4 STANDARD. NEMA 4X, 7, AND 9 OPTIONAL.
- METAL SURFACES ARE POWER TOOL CLEANED:
(1) COAT EPOXY MASTIC PRIMER, (1) COAT HEAVY DUTY EPOXY, COLOR WHITE
- LOADING CAPACITY LISTED IS APPROXIMATE AND BASED ON AVERAGE FLOWING PRODUCTS. CONSULT DCL FOR ACTUAL REQUIREMENTS.
- AIR WITHDRAWAL REQUIREMENTS ARE AVERAGE. CONSULT DCL FOR FINAL RECOMMENDATIONS.
- SPECIFICATIONS AND/OR DIMENSIONAL DATA ARE SUBJECT TO CHANGE. CONSULT DCL FOR CERTIFIED DRAWINGS.
- TUBE CONSTRUCTION NOTES: CONTAINED DESIGN STANDARD WITH 0.25 AR STEEL, AND 0.25 304 OR 316 STAINLESS STEEL. OTHER MATERIALS AVAILABLE TO SUIT APPLICATION.
- OPTIONS:**
ROTARY TRIMMING SPOON (SEE DRAWING# RTS-10001)
ROTARY LIMIT SWITCH, CABLE REEL, PRE-WIRE, SPRAY HEADER
- C/F = CONSULT FACTORY



REV	DATE	BY	DCL		SPECIALISTS IN ADVANCED DESIGN LOADING SYSTEMS		P.O. BOX 125 CHARLEVOIX, MICHIGAN 49720 (231) 547-5600	
			TOLERANCES UNLESS OTHERWISE SPECIFIED		DRAWN BY: TLC		SCALE: NONE	
			FRACTIONAL: 1/16" DECIMAL: .06 ANGULAR: 1/2		CHECKED BY: ENG		DATE: 10/06/92	
A 11/27/02 TLC			TITLE: TS40 LOADING SPOUT (OV STYLE) SINGLE				DRAWING No: TS40-10002	