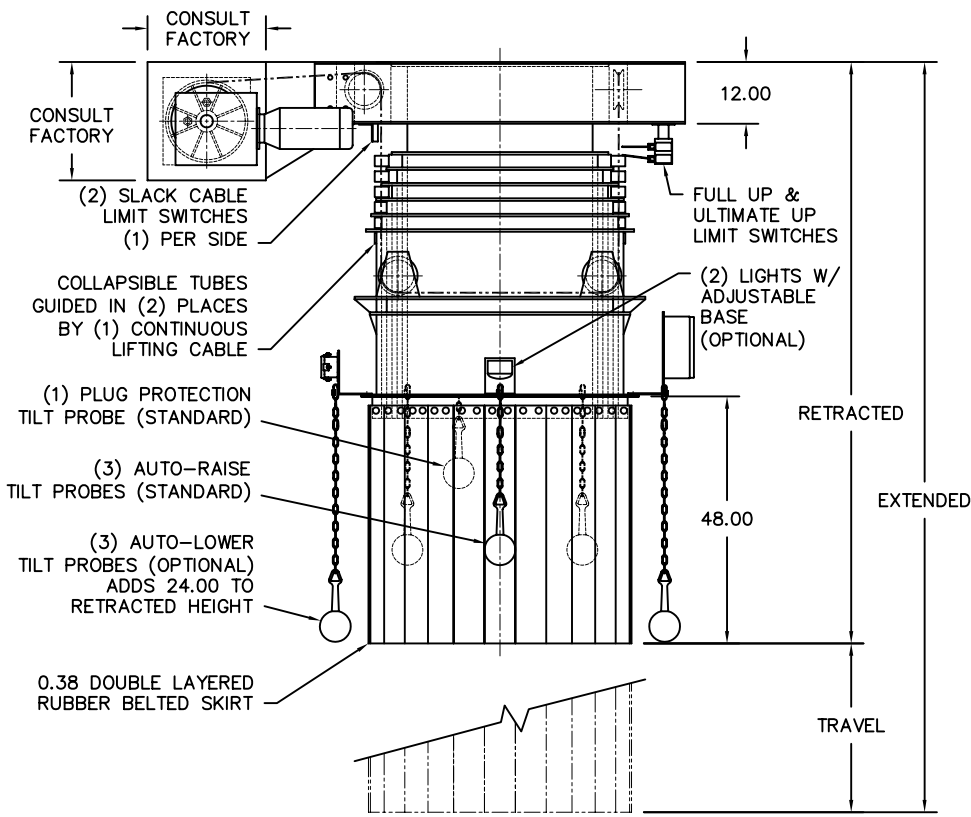


MODEL	TRAVEL	RETR	EXTD	DRIVE HP	A	B	C	D	E	EST WGT
TS36-08	96.00	186.00	282.00	1.5 HP/B	62.88	72.00	30.00	31.50	38.75	C/F
TS36-16	192.00	190.00	382.00	3 HP/B	62.88	72.00	30.00	31.50	38.75	C/F
TS36-24	288.00	194.00	482.00	5 HP/B	62.88	72.00	30.00	31.50	38.75	C/F
TS36-32	384.00	198.00	582.00	7.5 HP/B	62.88	72.00	30.00	31.50	38.75	C/F
TS36-40	480.00	202.00	682.00	10 HP/B	62.88	72.00	30.00	31.50	38.75	C/F
TS36-48	576.00	206.00	782.00	10 HP/B	62.88	72.00	30.00	31.50	38.75	C/F
TS36-56	672.00	210.00	882.00	15 HP/B	69.88	79.00	33.50	35.00	45.75	C/F
TS36-64	768.00	214.00	982.00	15 HP/B	69.88	79.00	33.50	35.00	45.75	C/F
TS36-72	864.00	218.00	1082.00	20 HP/B	69.88	79.00	33.50	35.00	45.75	C/F
TS36-80	960.00	222.00	1182.00	20 HP/B	69.88	79.00	33.50	35.00	45.75	C/F
TS36-88	1056.00	226.00	1282.00	20 HP/B	69.88	79.00	33.50	35.00	45.75	C/F
TS36-96	1152.00	230.00	1382.00	20 HP/B	69.88	79.00	33.50	35.00	45.75	C/F



**GENERAL NOTES:**

- LOADING CAPACITY: 2400 CFM
- LIFTING SPEED: 16 FPM AVERAGE
- ALL INDUSTRIAL VOLTAGES ARE AVAILABLE FOR ELECTRICAL COMPONENTS.
- PREWIRING OF ELECTRICAL COMPONENTS TO SPOUT FRAME JUNCTION BOX OPTIONAL.
- ELECTRICAL ENCLOSURES NEMA 4 STANDARD. NEMA 4X, 7, AND 9 OPTIONAL.
- METAL SURFACES ARE POWER TOOL CLEANED:  
(1) COAT EPOXY MASTIC PRIMER, (1) COAT HEAVY DUTY EPOXY, COLOR WHITE
- LOADING CAPACITY LISTED IS APPROXIMATE AND BASED ON AVERAGE FLOWING PRODUCTS. CONSULT DCL FOR ACTUAL REQUIREMENTS.
- AIR WITHDRAWAL REQUIREMENTS ARE AVERAGE. CONSULT DCL FOR FINAL RECOMMENDATIONS.
- SPECIFICATIONS AND/OR DIMENSIONAL DATA ARE SUBJECT TO CHANGE. CONSULT DCL FOR CERTIFIED DRAWINGS.
- TUBE CONSTRUCTION NOTES: CONTAINED DESIGN STANDARD WITH 0.25 AR STEEL, AND 0.25 304 OR 316 STAINLESS STEEL. OTHER MATERIALS AVAILABLE TO SUIT APPLICATION.
- OPTIONS:**  
ROTARY TRIMMING SPOON (SEE DRAWING# RTS-10001)  
ROTARY LIMIT SWITCH, CABLE REEL, PRE-WIRE, SPRAY HEADER
- C/F = CONSULT FACTORY

REV	DATE	BY	DCL		SPECIALISTS IN ADVANCED DESIGN LOADING SYSTEMS		P.O. BOX 125 CHARLEVOIX, MICHIGAN 49720 (231) 547-5600		
			TOLERANCES UNLESS OTHERWISE SPECIFIED		FRACTIONAL 1/16" DECIMAL .06 ANGULAR 1/2		DRAWN BY: TLC	SCALE: NONE	
			CHECKED BY: ENG		DATE: 10/06/92		DRAWING No: TS36-10002		
A	12/02/02	TLC	TITLE TS36 LOADING SPOUT (OV STYLE) SINGLE						