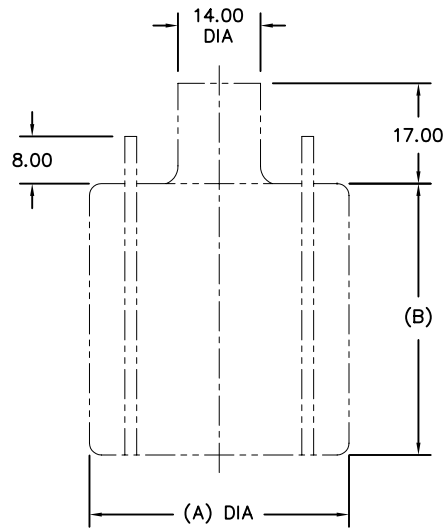


| MODEL | BAG SIZE | A | B | C | D | E | F | G | H | EST WGT |
|--------|----------|-------|-------|-------|-------|-------|-------|--------|--------|----------|
| TBFS25 | 25 CU FT | 44.00 | 29.00 | 60.00 | 60.00 | 44.00 | 53.38 | 66.88 | 65.50 | 1127 LB* |
| TBFS30 | 30 CU FT | 44.00 | 34.00 | 60.00 | 60.00 | 49.00 | 58.38 | 71.88 | 70.50 | 1150 LB* |
| TBFS35 | 35 CU FT | 44.00 | 40.00 | 60.00 | 60.00 | 55.00 | 64.38 | 77.88 | 76.50 | 1178 LB* |
| TBFS40 | 40 CU FT | 44.00 | 46.00 | 60.00 | 60.00 | 61.00 | 70.38 | 83.88 | 82.50 | 1206 LB* |
| TBFS45 | 45 CU FT | 44.00 | 52.00 | 60.00 | 60.00 | 67.00 | 76.38 | 89.88 | 88.50 | 1234 LB* |
| TBFS50 | 50 CU FT | 44.00 | 57.00 | 60.00 | 60.00 | 72.00 | 81.38 | 94.88 | 93.50 | 1257 LB* |
| TBFS55 | 55 CU FT | 44.00 | 63.00 | 60.00 | 60.00 | 78.00 | 87.38 | 100.38 | 99.50 | 1285 LB* |
| TBFS60 | 60 CU FT | 44.00 | 69.00 | 60.00 | 60.00 | 84.00 | 93.38 | 106.38 | 105.50 | 1312 LB* |

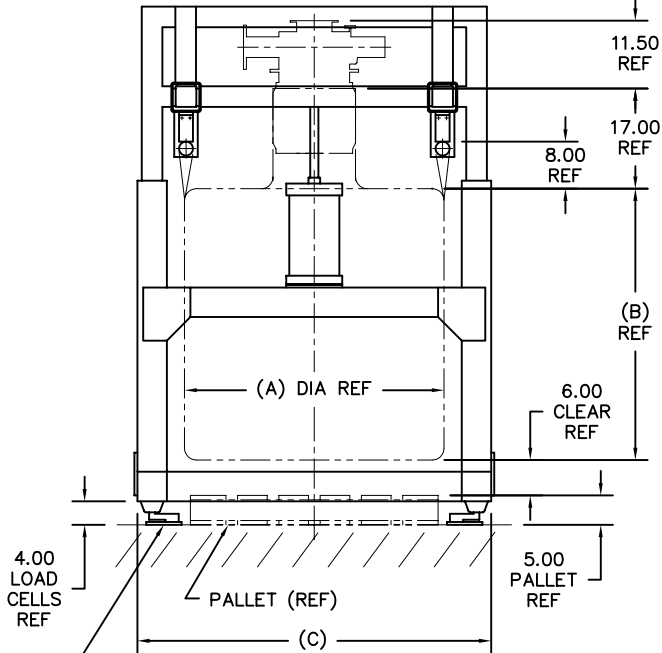
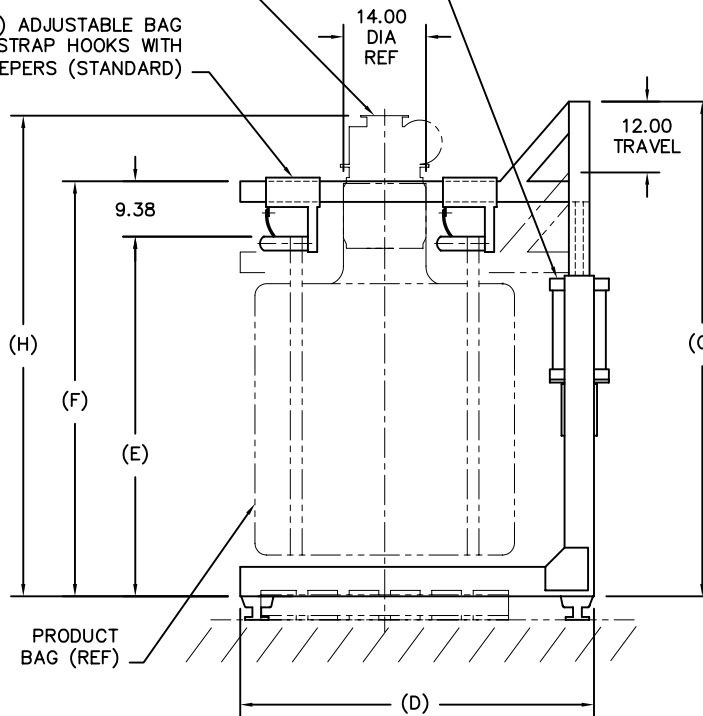


TYPICAL PRODUCT BAG DIMENSIONS. CUSTOMER TO CONFIRM THESE DIMENSIONS.

AIR CYLINDER ACTUATOR WITH ELECTRICALLY OPERATED SOLENOID VALVE STANDARD. HYDRAULIC CYLINDER, OR ELECTRIC OR MANUAL MACHINE SCREW ACTUATOR (OPTIONAL).

DCL BAGFILL NECK (SEE DRAWING# BFN-10001)

(4) ADJUSTABLE BAG STRAP HOOKS WITH KEEPERS (STANDARD)



(4) LOAD CELLS PROVIDED AS STANDARD. PLATFORM WEIGH SCALE (OPTIONAL).

GENERAL NOTES:

FRAME CONSTRUCTION IS STRUCTURAL STEEL TUBING. STANDARD CONSTRUCTION IS MILD STEEL. STAINLESS STEEL IS OPTIONAL.

METAL SURFACES ARE POWER TOOL CLEANED, PRIMED, AND FINISHED WITH INDUSTRIAL ENAMEL.

FULL-UP, FULL-DOWN LIMIT SWITCHES ARE STANDARD. AN INTERMEDIATE-POSITION SWITCH IS OPTIONAL.

ELECTRICAL COMPONENTS AND ENCLOSURES ARE AVAILABLE IN NEMA 4, 4X, 7, AND 9.

SPECIFICATIONS AND/OR DIMENSIONAL DATA ARE SUBJECT TO CHANGE. CONSULT DCL FOR CERTIFIED DRAWINGS.

ROLLER CONVEYOR, TILT ROLLER CONVEYOR, VIBRATING TABLE, AND POWERED BAG STRAP HOOKS ARE OPTIONAL.

FOR ROLLER CONVEYOR AND/OR VIBRATING GRID TABLE, ADD 20.00 TO DIMENSIONS (E), (F), (G), AND (H).

*ESTIMATED WEIGHTS DO NOT INCLUDE OPTIONAL EQUIPMENT OR ELECTRICAL COMPONENTS.

| REV | DATE | BY | DCL | | SPECIALISTS IN ADVANCED DESIGN LOADING SYSTEMS | | P.O. BOX 125 CHARLEVOIX, MICHIGAN 49720 (231) 547-5600 | | |
|-----|----------|-----|---|--|--|--|--|--|--|
| | | | TOLERANCES UNLESS OTHERWISE SPECIFIED | | DRAWN BY: TLC | | SCALE: NONE | | |
| | | | FRACTIONAL: 1/16" DECIMAL: .06 ANGULAR: 1/2 | | CHECKED BY: ENG | | DATE: 10-06-92 | | |
| A | 10-07-02 | TLC | TITLE: TBFS TWO POST BAGFILL STATION | | | | DRAWING No: TBFS-10001 | | |