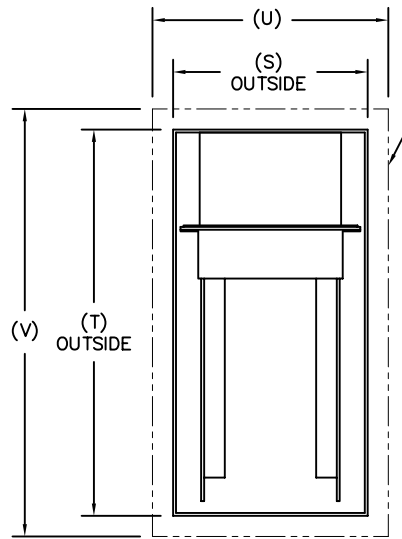
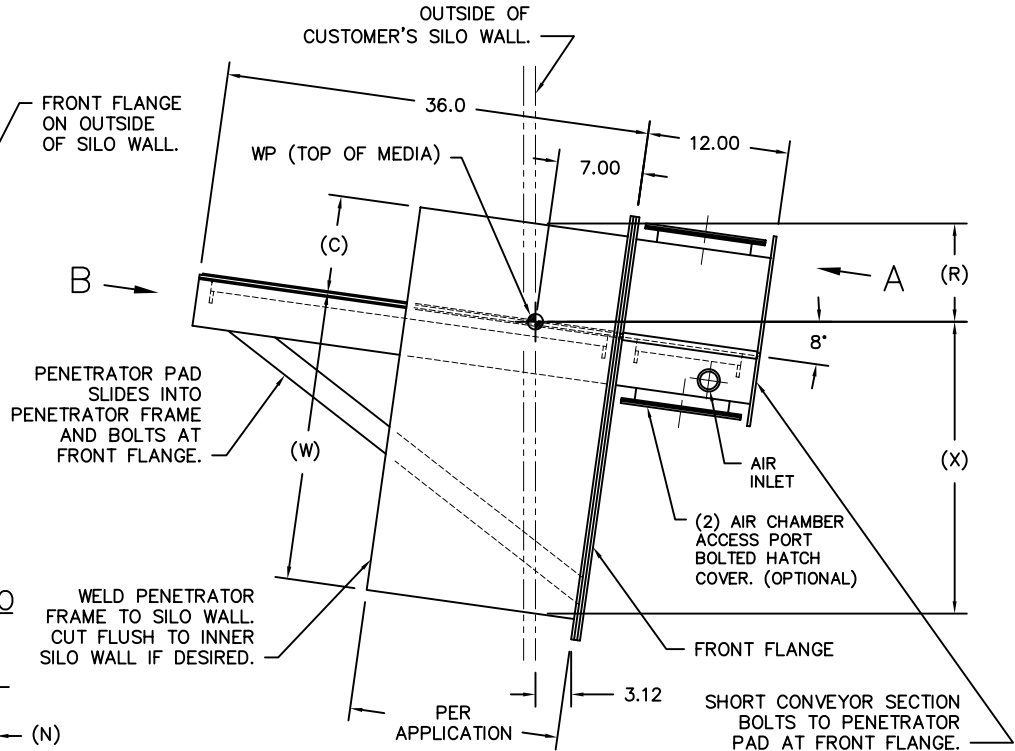


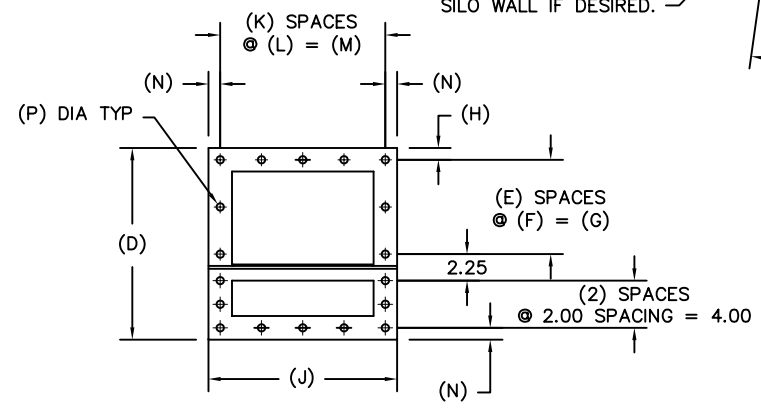
MODEL	A	B	C	D	E	F	G	H	J	K	L	M	N	P	R	S	T	U	V	W	X	EST WGT
SPA6X4	6.00	4.00	4.25	12.25	1	4.00	4.00	1.00	10.00	2	4.00	8.00	1.00	0.56	4.31	10.50	28.75	14.00	32.25	24.50	24.25	305 LB*
SPA8X6	8.00	6.00	6.25	14.25	2	3.00	6.00	1.00	12.00	2	5.00	10.00	1.00	0.56	6.31	12.50	30.75	16.00	34.25	24.50	24.25	335 LB*
SPA10X6	10.00	6.00	6.25	14.25	2	3.00	6.00	1.00	14.00	3	4.00	12.00	1.00	0.56	6.31	14.50	30.75	18.00	34.25	24.50	24.25	380 LB*
SPA12X8	12.00	8.00	8.25	16.25	2	4.00	8.00	1.00	16.00	4	3.50	14.00	1.00	0.56	8.31	16.50	32.75	20.00	36.25	24.50	24.25	410 LB*
SPA14X8	14.00	8.00	8.38	16.25	2	4.00	8.00	1.00	18.00	4	4.00	16.00	1.00	0.56	8.43	18.75	33.00	22.00	36.25	24.63	24.38	445 LB*
SPA16X10	16.00	10.00	10.38	18.25	2	5.00	10.00	1.00	20.00	4	4.50	18.00	1.00	0.56	10.50	20.75	35.00	24.00	38.25	24.63	24.38	485 LB*
SPA18X10	18.00	10.00	10.38	18.25	2	5.00	10.00	1.00	22.00	4	5.00	20.00	1.00	0.56	10.50	22.75	35.00	26.00	38.25	24.63	24.38	520 LB*
SPA20X12	20.00	12.00	12.38	20.25	3	4.00	12.00	1.00	24.00	4	5.50	22.00	1.00	0.56	12.50	24.75	37.00	28.00	40.25	24.63	24.38	560 LB*
SPA22X12	22.00	12.00	12.38	20.25	3	4.00	12.00	1.00	26.00	4	6.00	24.00	1.00	0.56	12.50	26.75	37.00	30.00	40.25	24.63	24.38	590 LB*
SPA24X14	24.00	14.00	14.38	22.25	4	3.50	14.00	1.00	28.00	4	6.50	26.00	1.00	0.56	14.50	28.75	39.00	32.00	42.25	24.63	24.38	630 LB*



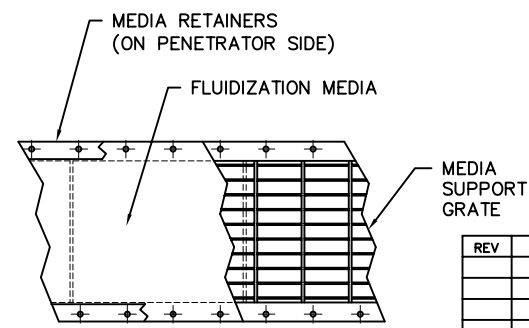
VIEW B FROM INSIDE OF SILO



WELD PENETRATOR FRAME TO SILO WALL. CUT FLUSH TO INNER SILO WALL IF DESIRED.



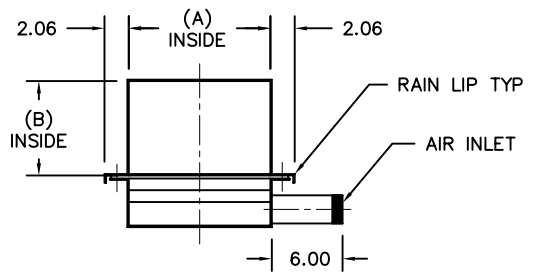
VIEW A TYPICAL CONVEYOR FLANGE DETAIL



VIEW OF AIR CHAMBER

GENERAL NOTES:

- PRODUCT AND AIR CHAMBER CONSTRUCTION IS 11 GA MILD STEEL. ABRASION RESISTANT OR STAINLESS STEEL CONSTRUCTION IS OPTIONAL.
- ALL MATING FLANGES ARE 0.25 PLATE AS STANDARD. THICKER FLANGES ARE AVAILABLE TO MEET VARIOUS SILO STRENGTH CONDITIONS.
- MEDIA SUPPORT IS 0.13 x 1.00 BAR GRATING WITH 1.00 CENTERS.
- STANDARD AERATION MEDIA IS 0.25 NEEDED POLYESTER RATED AT 310° MAXIMUM TEMPERATURE. OTHER MEDIA TYPES ARE OPTIONAL. STAINLESS STEEL MESH COVERING IS ALSO AVAILABLE.
- NEOPRENE OR SILICONE GASKETS ARE AVAILABLE FOR ALL FLANGE CONNECTIONS. OTHER GASKET MATERIALS OPTIONAL.
- STANDARD AIR INLET IS 2.00 NPT, WITH A MANUAL BALANCE VALVE AS OPTIONAL. 3.00 & 4.00 INLETS, 150# FLANGES, AND BUTTERFLY VALVES ARE OPTIONAL.
- METAL SURFACES ARE ETCHED, PRIMED, AND FINISHED WITH INDUSTRIAL ENAMEL.
- SPECIFICATIONS AND/OR DIMENSIONAL DATA ARE SUBJECT TO CHANGE. CONSULT DCL FOR CERTIFIED DRAWINGS.
- \*ESTIMATED WEIGHTS DO NOT INCLUDE OPTIONAL EQUIPMENT.



TYPICAL CONVEYOR BODY SECTION

REV	DATE	BY	DCL		SPECIALISTS IN ADVANCED DESIGN LOADING SYSTEMS		P.O. BOX 125 CHARLEVOIX, MICHIGAN 49720 (231) 547-5600	
B	10-01-04	JNM	TOLERANCES UNLESS OTHERWISE SPECIFIED		FRACTIONAL 1/16" DECIMAL .06 ANGULAR 1/2		DRAWN BY: TLC SCALE NONE	
A	04-25-02	TLC	TITLE SPA SILO PENETRATION ADAPTER (LOW TOP)		DRAWING No: SPA-10001		CHECKED BY: ENG DATE: 10-06-92	