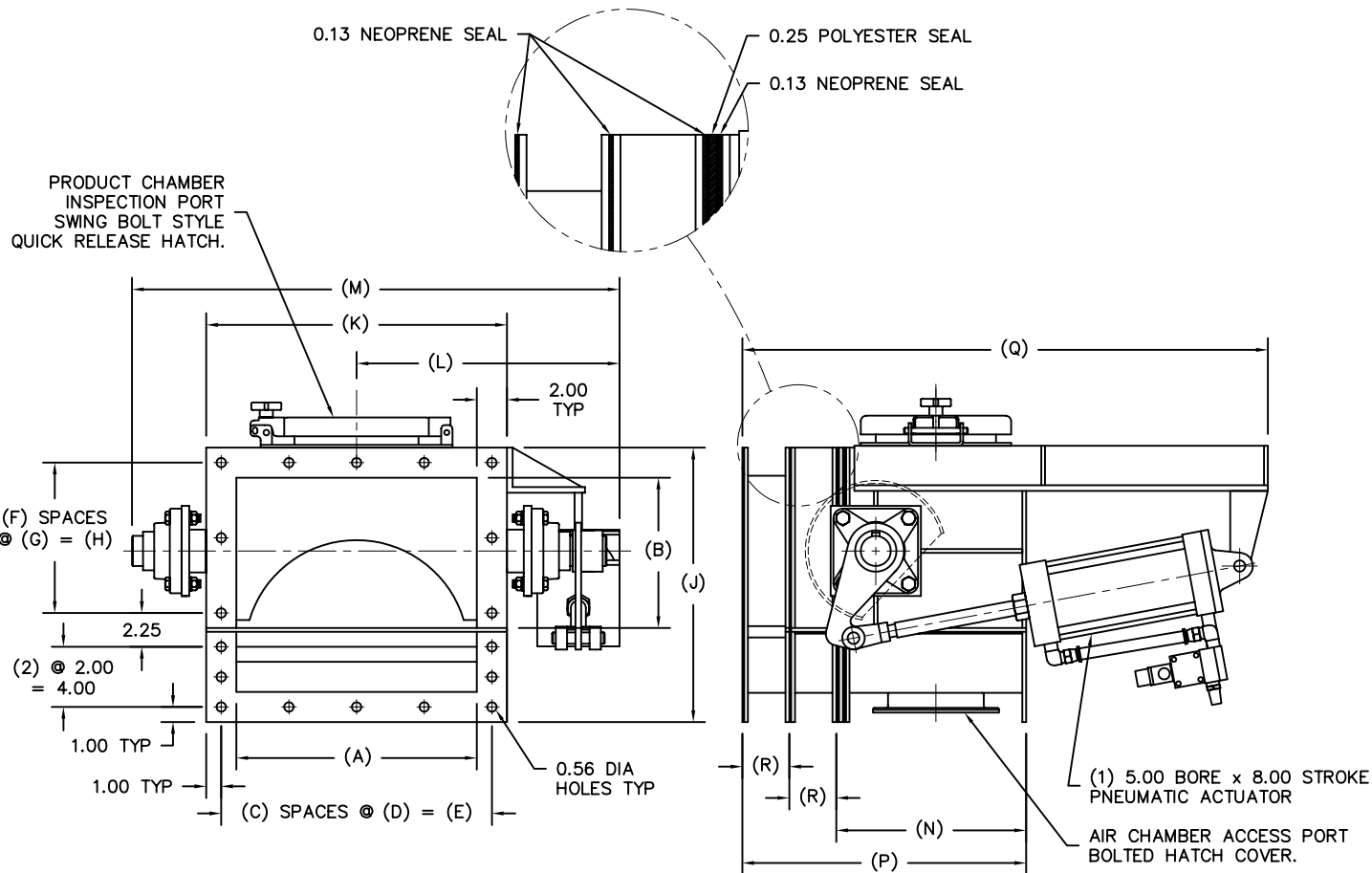


MODEL	A	B	C	D	E	F	G	H	J	K	L	M	N	P	Q	R	EST WGT
RTV8X6	C/F	C/F	C/F	C/F	C/F	C/F	C/F	C/F	C/F	C/F	C/F	C/F	C/F	C/F	C/F	C/F	C/F
RTV10X6	C/F	C/F	C/F	C/F	C/F	C/F	C/F	C/F	C/F	C/F	C/F	C/F	C/F	C/F	C/F	C/F	C/F
RTV12X8	12.00	8.00	4	3.50	14.00	2	4.00	8.00	16.25	16.00	15.50	28.44	12.63	18.63	34.69	3.13	290 LB*
RTV14X8	14.00	8.00	4	4.00	16.00	2	4.00	8.00	16.25	18.00	16.50	30.44	12.63	18.63	34.69	3.13	305 LB*
RTV16X10	16.00	10.00	4	4.50	18.00	2	5.00	10.00	18.25	20.00	17.50	32.44	12.63	20.63	36.69	4.13	370 LB*
RTV18X10	18.00	10.00	4	5.00	20.00	2	5.00	10.00	18.25	22.00	18.50	34.44	12.63	20.63	36.69	4.13	380 LB*
RTV20X12	20.00	12.00	4	5.50	22.00	3	4.00	12.00	20.25	24.00	19.50	36.44	12.63	22.63	38.69	5.13	439 LB*
RTV22X12	22.00	12.00	4	6.00	24.00	3	4.00	12.00	20.25	26.00	20.50	38.44	12.63	22.63	38.69	5.13	C/F
RTV24X14	24.00	14.00	4	6.50	26.00	4	3.50	14.00	22.25	28.00	21.50	40.44	12.63	24.63	40.69	6.13	C/F



GENERAL NOTES:

PRODUCT CHAMBER IS MANUFACTURED OF 0.19 MILD STEEL. 304 SS, 316 SS, AND AR STEEL IS OPTIONAL.

AIR CHAMBER IS MANUFACTURED OF 11 GAUGE MILD STEEL. 304 SS, 316 SS, AND AR STEEL IS OPTIONAL.

AERATION MEDIA IS 0.25 NEEDED POLYESTER, CAPABLE OF TEMPERATURES UP TO 310° F. THERE ARE A NUMBER OF OPTIONAL MATERIALS TO FIT CUSTOMER SPECIFICATIONS.

MEDIA SUPPORT IS CONSTRUCTED OF 0.13 x 1.00 BAR GRATING.

ALL MATING FLANGES ARE 0.25 PLATE.

PRODUCT CHAMBER DOORS ARE QUICK RELEASE TYPE WITH GASKET SEAL.

AIR CHAMBER DOORS ARE BOLTED TYPE WITH GASKET SEAL.

INSTALLATION HARDWARE INCLUDES; PLATED STEEL NUTS, BOLTS, WASHERS, AND SEALANT CAULK. BOLTS FOR MATING TO CUSTOMERS EQUIPMENT BY OTHERS.

METAL SURFACES ARE POWER TOOL CLEANED, PRIMED, AND FINISHED WITH INDUSTRIAL ENAMEL.

SPECIFICATIONS AND/OR DIMENSIONAL DATA SUBJECT TO CHANGE. CONSULT DCL FOR CERTIFIED DRAWINGS.

FLOW RATES ARE BASED ON A 8° MINIMUM INCLINE ANGLE AND FAVORABLE CONVEYOR CONDITIONS.

PNEUMATIC ACTUATOR OPERATES AT 80 PSI. STANDARD POSITIONING IS FULL OPEN/CLOSE. OPTIONAL POSITIONING INCLUDE; 3 POSITION SOLENOID OPERATED PACKAGE AND 3-15 PSI INFINITE PACKAGE.

ELECTRICAL COMPONENTS NEMA 4 STANDARD. NEMA 4X, 7, AND 9 OPTIONAL.

C/F = CONSULT FACTORY

*ESTIMATED WEIGHTS DO NOT INCLUDE ACTUATOR OR ELECTRICAL COMPONENTS.

REV	DATE	BY	DCL		SPECIALISTS IN ADVANCED DESIGN LOADING SYSTEMS		P.O. BOX 125 CHARLEVOIX, MICHIGAN 49720 (231) 547-5800	
			TOLERANCES UNLESS OTHERWISE SPECIFIED		FRACTIONAL: 1/16"		DECIMAL: .06	
			ANGULAR: 1/2°		DRAWN BY: JNM		SCALE: NONE	
					CHECKED BY: ENG		DATE: 09-06-00	
B	07-23-02	JNM	TITLE		RTV ROTARY THROTTLE VALVE (LOW TOP)		DRAWING No: RTV-10001	
A	09-27-00	JNM						