

MODEL	TRAVEL	RETR	EXTD	URE HP	STL HP	URE WGT	STL WGT
OV88HD-10	120.00	126.00	246.00	5 HP/B	5 HP/B	C/F	C/F
OV88HD-15	180.00	C/F	C/F	5 HP/B	7.5 HP/B	C/F	C/F
OV88HD-20	240.00	138.00	378.00	5 HP/B	7.5 HP/B	C/F	C/F
OV88HD-25	300.00	C/F	C/F	5 HP/B	7.5 HP/B	C/F	C/F
OV88HD-30	360.00	147.00	507.00	5 HP/B	7.5 HP/B	C/F	C/F
OV88HD-35	420.00	C/F	C/F	5 HP/B	7.5 HP/B	C/F	C/F
OV88HD-40	480.00	156.00	636.00	5 HP/B	7.5 HP/B	C/F	C/F
OV88HD-45	540.00	C/F	C/F	7.5 HP/B	10 HP/B	C/F	C/F
OV88HD-50	600.00	165.00	765.00	7.5 HP/B	10 HP/B	C/F	C/F
OV88HD-55	660.00	177.00	837.00	7.5 HP/B	10 HP/B	C/F	C/F
OV88HD-60	720.00	174.00	894.00	7.5 HP/B	10 HP/B	C/F	C/F
OV88HD-65	780.00	183.00	963.00	10 HP/B	15 HP/B	C/F	C/F
OV88HD-70	840.00	183.00	1023.00	10 HP/B	15 HP/B	C/F	C/F
OV88HD-75	900.00	189.00	1089.00	10 HP/B	15 HP/B	C/F	C/F
OV88HD-80	960.00	192.00	1152.00	10 HP/B	15 HP/B	C/F	C/F

GENERAL NOTES:

LOADING CAPACITY: 2700 CFM
 AVERAGE AIR WITHDRAWAL: 7000 CFM
 LIFTING SPEED: 6 FPM THRU 36 FPM

ALL INDUSTRIAL VOLTAGES ARE AVAILABLE FOR ELECTRICAL COMPONENTS.

PREWIRING OF ELECTRICAL COMPONENTS TO SPOUT FRAME JUNCTION BOX OPTIONAL.

ELECTRICAL ENCLOSURES NEMA 4 STANDARD. NEMA 4X, 7, AND 9 OPTIONAL.

COLLAPSIBLE FABRIC SLEEVE CAN BE CONSTRUCTED OF HYPALON/NYLON, GRAPHITE FIBER GLASS OR A NUMBER OF OTHER FABRICS. SLEEVES COME STANDARD WITH ALUMINUM OUTER AND INNER RINGS STANDARD.

METAL SURFACES ARE POWER TOOL CLEANED:
 (1) COAT EPOXY MASTIC PRIMER, (1) COAT HEAVY DUTY EPOXY

LOADING CAPACITY LISTED IS APPROXIMATE AND BASED ON AVERAGE FLOWING PRODUCTS. CONSULT DCL FOR ACTUAL REQUIREMENTS.

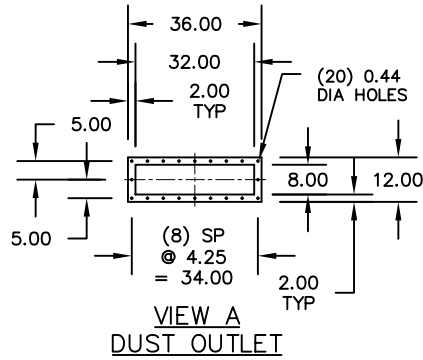
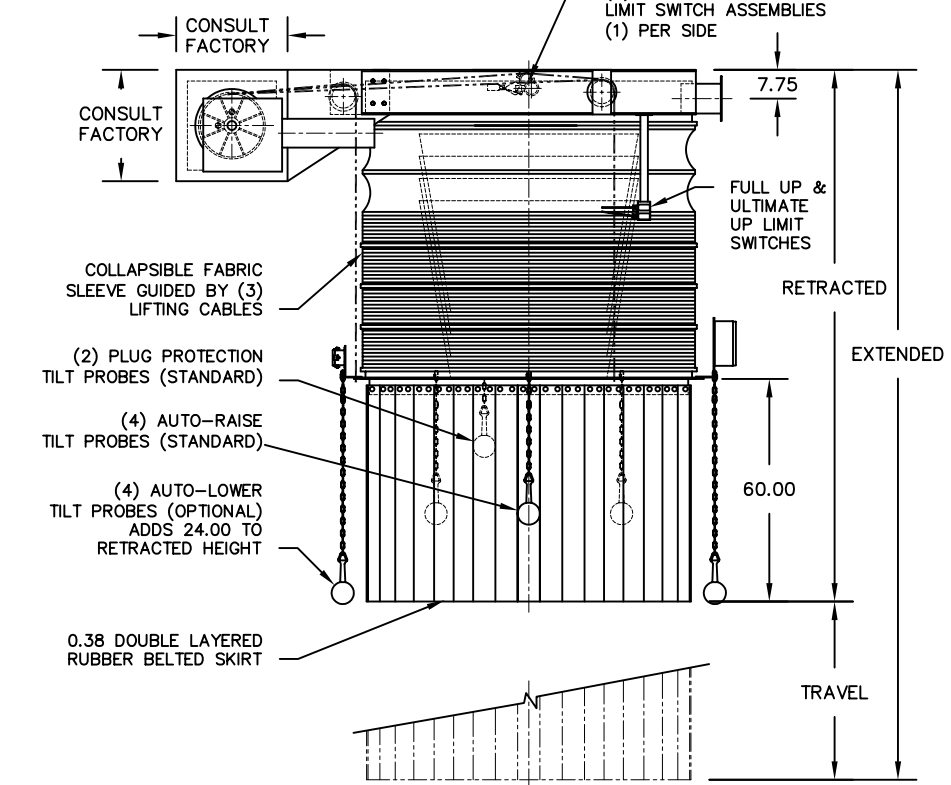
AIR WITHDRAWAL REQUIREMENTS ARE AVERAGE. CONSULT DCL FOR FINAL RECOMMENDATIONS.

SPECIFICATIONS AND/OR DIMENSIONAL DATA ARE SUBJECT TO CHANGE. CONSULT DCL FOR CERTIFIED DRAWINGS.

CONE CONSTRUCTION NOTES: CONTAINED INNER DESIGN STANDARD WITH 0.13 AR STEEL, AND 0.13 304 OR 316 STAINLESS STEEL. OTHER MATERIALS AVAILABLE TO SUIT APPLICATION.

OTHER OPTIONS:

- DEADFALL (SEE DRAWING# DF-10001)
 - H-STYLE DEADFALL (SEE DRAWING# DF-10002)
 - ROTARY LIMIT SWITCH, CABLE REEL, PRE-WIRE
- C/F = CONSULT FACTORY



REV	DATE	BY	DCL		SPECIALISTS IN ADVANCED DESIGN LOADING SYSTEMS		P.O. BOX 125 CHARLEVOIX, MICHIGAN 49720 (231) 547-5600		
			TOLERANCES UNLESS OTHERWISE SPECIFIED		DRAWN BY: TLC		SCALE: NONE		
			FRACTIONAL: 1/16" DECIMAL: .06 ANGULAR: 1/2		CHECKED BY: ENG		DATE: 09/30/02		
TITLE			OV88HD LOADING SPOUT (OV STYLE)				DRAWING No: OV88HD-10001		
A			09/30/02 TLC						