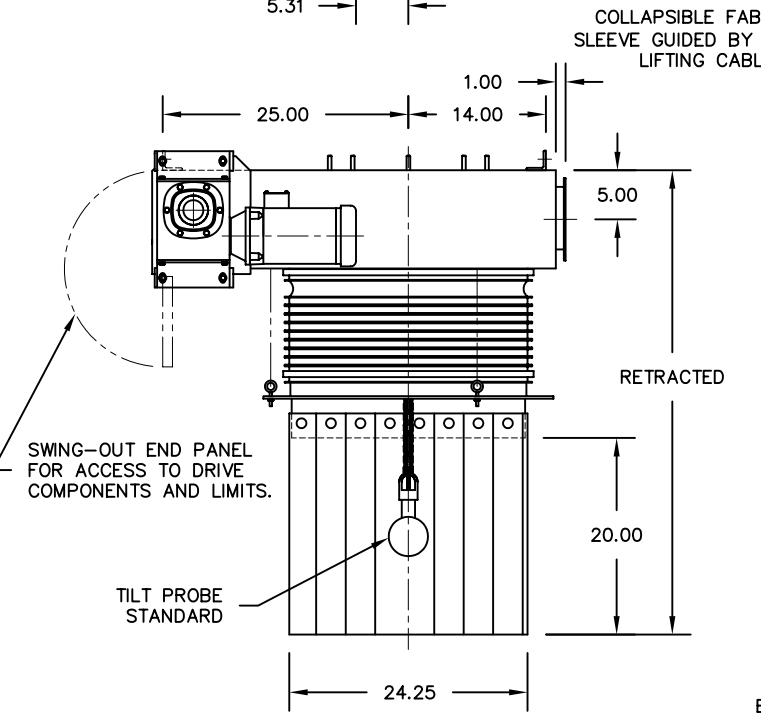


SIDE DUST OUTLET 6.13 DIA WITH (6) 0.31 HOLES ON A 7.31 BOLT CIRCLE.

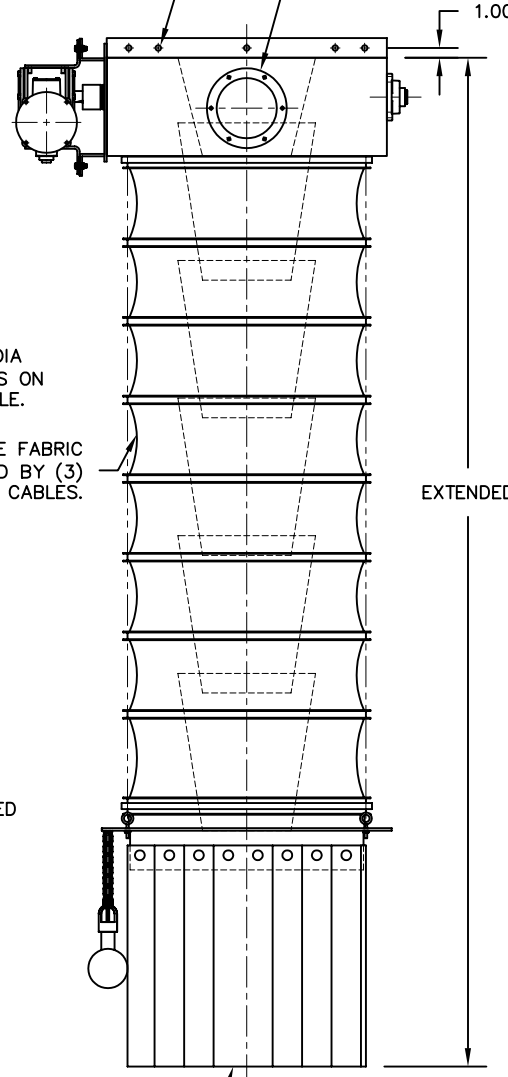
(10) 0.44 DIA MOUNTING HOLES



COLLAPSIBLE FABRIC SLEEVE GUIDED BY (3) LIFTING CABLES.

RETRACTED

0.25 RUBBER BELTED SKIRT



EXTENDED

MODEL	TRAVEL	RETR	EXTD	URE WGT	STL WGT	URE HP	STL HP
OV24-02	24.00	44.00	68.00	541 LB	590 LB	1 HP	1 HP
OV24-04	48.00	48.00	96.00	566 LB	648 LB	1 HP	1 HP
OV24-06	72.00	52.00	124.00	592 LB	706 LB	1 HP	1 HP
OV24-08	96.00	56.00	152.00	620 LB	768 LB	1 HP	1 HP/B
OV24-10	120.00	60.00	180.00	650 LB	831 LB	1 HP	1.5 HP/B
OV24-12	144.00	64.00	208.00	675 LB	889 LB	1 HP	1.5 HP/B
OV24-14	168.00	68.00	236.00	704 LB	951 LB	1 HP/B	1.5 HP/B
OV24-16	192.00	72.00	264.00	730 LB	1010 LB	1 HP/B	2 HP/B
OV24-18	216.00	76.00	292.00	760 LB	1072 LB	1.5 HP/B	2 HP/B

GENERAL NOTES:

LOADING CAPACITY: 200 CFM
 AVERAGE AIR WITHDRAWAL: 800 TO 1000 CFM
 LIFTING SPEED: 16 FPM AVG

ALL INDUSTRIAL VOLTAGES ARE AVAILABLE FOR ELECTRICAL COMPONENTS.

PREWIRING OF ELECTRICAL COMPONENTS TO SPOUT FRAME JUNCTION BOX OPTIONAL.

ELECTRICAL ENCLOSURES NEMA 4 STANDARD. NEMA 4X, 7, AND 9 OPTIONAL.

COLLAPSIBLE FABRIC SLEEVE CAN BE CONSTRUCTED OF URETHANE/NYLON, HYPALON/NYLON, OR A NUMBER OF OTHER FABRICS. SLEEVES COME STANDARD WITH ALUMINUM OUTER AND INNER RINGS STANDARD.

METAL SURFACES ARE POWER TOOL CLEANED, PRIMED, AND FINISHED WITH INDUSTRIAL ENAMEL.

LOADING CAPACITY LISTED IS APPROXIMATE AND BASED ON FREE FLOWING PRODUCTS. CONSULT DCL FOR ACTUAL REQUIREMENTS.

AIR WITHDRAWAL REQUIREMENTS ARE AVERAGE. CONSULT DCL FOR FINAL RECOMMENDATIONS.

SPECIFICATIONS AND/OR DIMENSIONAL DATA ARE SUBJECT TO CHANGE. CONSULT DCL FOR CERTIFIED DRAWINGS.

CONE CONSTRUCTION NOTES: CONTAINED INNER DESIGN STANDARD WITH 0.13 AR STEEL, AND 0.13 304 OR 316 STAINLESS STEEL. OTHER MATERIALS AVAILABLE TO SUIT APPLICATION.

OPTIONS:

150# INLET FLANGE. ADDS 3.00 TO RETRACTED HEIGHT.

LEVEL SENSORS; TILT PROBE, RF PROBE, CAPACITANCE PROBE, PNEUMATIC PROBE.

AIR VIBRATOR KIT REQUIRES (40) CFM @ (80) PSI.

*ESTIMATED WEIGHTS DO NOT INCLUDE OPTIONAL EQUIPMENT OR ELECTRICAL COMPONENTS.

REV	DATE	BY	DCL		SPECIALISTS IN ADVANCED DESIGN LOADING SYSTEMS		P.O. BOX 125 CHARLEVOIX, MICHIGAN 49720 (231) 547-5600		
C	09-25-07	JNM	TOLERANCES UNLESS OTHERWISE SPECIFIED		FRACTIONAL: 1/16" DECIMAL: .06 ANGULAR: 1/2		DRAWN BY: JNM	SCALE: NONE	
B	08-14-07	JNM	CHECKED BY: ENG		DATE: 10-06-92				
A	10-04-00	JNM	TITLE: OV24 LOADING SPOUT (OV STYLE)				DRAWING No: OV24-10001		