

MODEL	X-TRAVEL	Y-TRAVEL	A	B	C	D	EST WGT
HPD4X2	48.00	24.00	148.00	N/A	40.00	2.25	4000 LB*
HPD6X2	72.00	24.00	196.00	187.38	55.00	3.00	5020 LB*

GENERAL NOTES:

POSITIONING SPEED: APPROX 5 IN/SEC

HOPPER CONSTRUCTION IS 11 GA MILD STEEL. STAINLESS STEEL CONSTRUCTION AND AR STEEL IS OPTIONAL.

ALL INDUSTRIAL VOLTAGES ARE AVAILABLE FOR ELECTRICAL COMPONENTS.

PREWIRING OF ELECTRICAL COMPONENTS TO SPOUT FRAME JUNCTION BOX OPTIONAL.

ELECTRICAL ENCLOSURES NEMA 4 STANDARD. NEMA 4X, 7, AND 9 OPTIONAL.

METAL SURFACES ARE POWER TOOL CLEANED, PRIMED, AND FINISHED WITH INDUSTRIAL ENAMEL.

SPECIFICATIONS AND/OR DIMENSIONAL DATA ARE SUBJECT TO CHANGE. CONSULT DCL FOR CERTIFIED DRAWINGS.

OPTIONS:

- END OF TRAVEL LIMIT SWITCHES
- PRE-WIRED ELECTRICAL ENCLOSURE

*ESTIMATED WEIGHTS DO NOT INCLUDE OPTIONAL EQUIPMENT OR ELECTRICAL COMPONENTS.

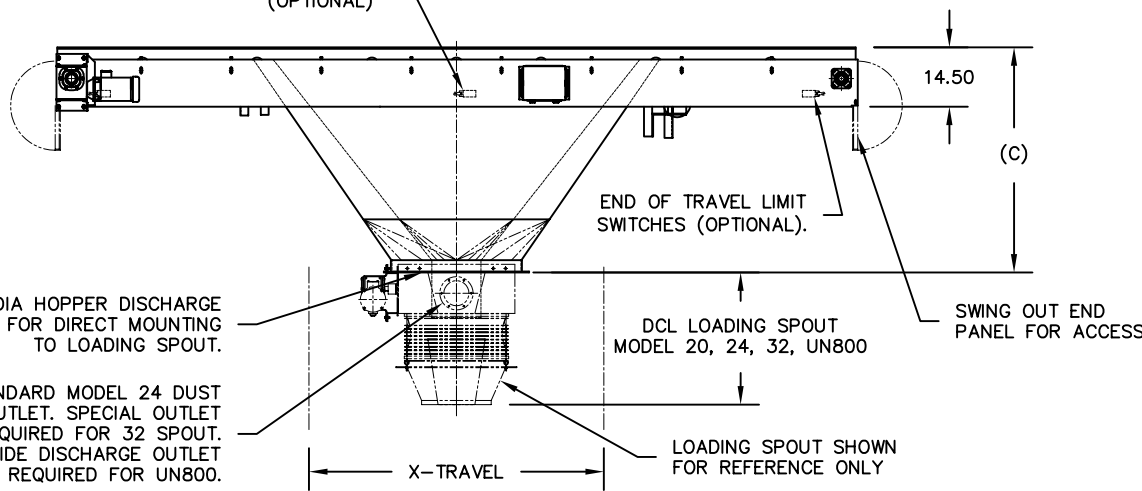
(20) 0.56 DIA HOLES ON A 27.50 SQ BOLT PATTERN

0.56 DIA SUPPORT HOLES TO MOUNT TO CUSTOMER'S STRUCTURE.
(24) MODEL HPD4X2
(32) MODEL HPD6X2

1 HP WORM GEAR DRIVE W/TORQUE LIMITING SLIP CLUTCH & DUAL CHAIN DRIVE (TYP BOTH DIR).

PRE-WIRED ELECTRICAL ENCLOSURE (OPTIONAL)

RETURN TO CENTER LIMIT SWITCHES BOTH DIRECTIONS (OPTIONAL)



END OF TRAVEL LIMIT SWITCHES (OPTIONAL).

14.00 DIA HOPPER DISCHARGE FOR DIRECT MOUNTING TO LOADING SPOUT.

DCL LOADING SPOUT MODEL 20, 24, 32, UN800

SWING OUT END PANEL FOR ACCESS

STANDARD MODEL 24 DUST OUTLET. SPECIAL OUTLET REQUIRED FOR 32 SPOUT. SIDE DISCHARGE OUTLET REQUIRED FOR UN800.

LOADING SPOUT SHOWN FOR REFERENCE ONLY

REV	DATE	BY	DCL		SPECIALISTS IN ADVANCED DESIGN LOADING SYSTEMS		P.O. BOX 125 CHARLEVOIX, MICHIGAN 49720 (231) 547-5600	
			TOLERANCES UNLESS OTHERWISE SPECIFIED		FRACTIONAL 1/16" DECIMAL .06 ANGULAR 1/2		DRAWN BY: RB	SCALE: NONE
							CHECKED BY: ENG	DATE: 02-19-02
A	04-08-04	JNM	TITLE: HPD DUAL DIRECTION POSITIONER (VENT)				DRAWING No: HPD-10004	