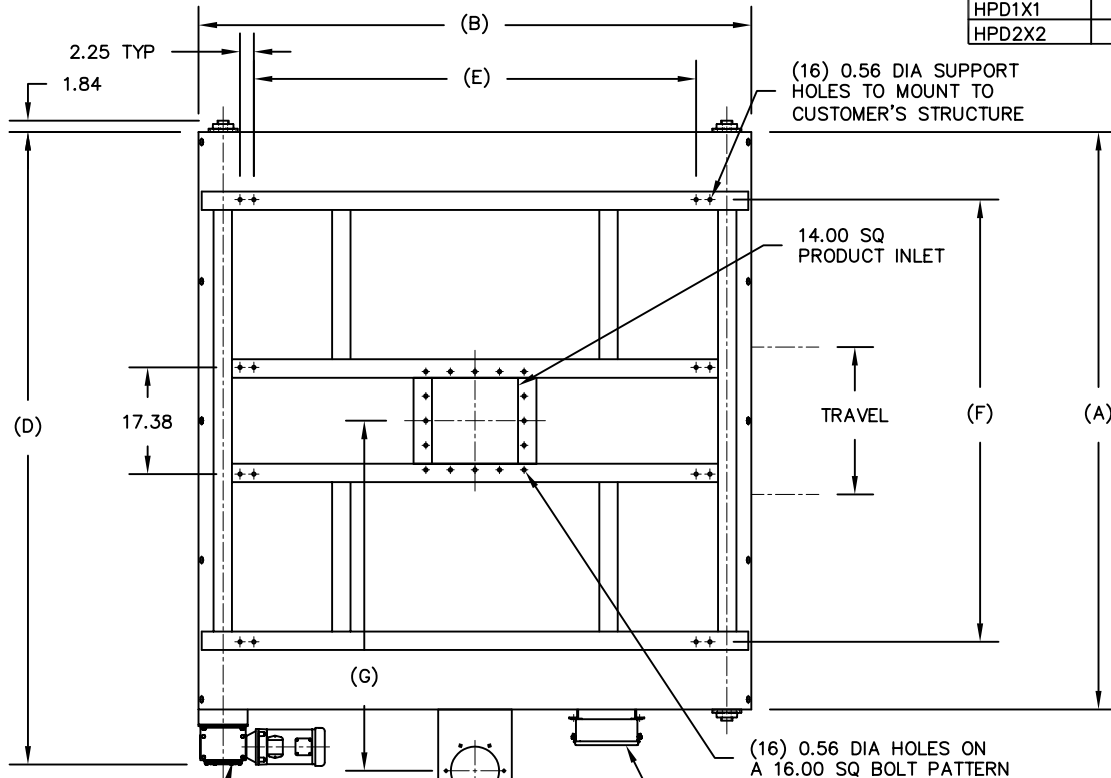


MODEL	TRAVEL	A	B	C	D	E	F	G	EST WGT
HPD1X1	12.00	76.00	72.00	27.00	85.75	54.00	60.00	48.00	2020 LB*
HPD2X2	24.00	94.00	90.00	27.00	103.75	72.00	72.00	57.00	2510 LB*



GENERAL NOTES:

POSITIONING SPEED: APPROX 5 IN/SEC

HOPPER CONSTRUCTION IS 11 GA MILD STEEL. STAINLESS STEEL CONSTRUCTION AND AR STEEL IS OPTIONAL.

ALL INDUSTRIAL VOLTAGES ARE AVAILABLE FOR ELECTRICAL COMPONENTS.

PREWIRING OF ELECTRICAL COMPONENTS TO SPOUT FRAME JUNCTION BOX OPTIONAL.

ELECTRICAL ENCLOSURES NEMA 4 STANDARD. NEMA 4X, 7, AND 9 OPTIONAL.

METAL SURFACES ARE POWER TOOL CLEANED, PRIMED, AND FINISHED WITH INDUSTRIAL ENAMEL.

SPECIFICATIONS AND/OR DIMENSIONAL DATA ARE SUBJECT TO CHANGE. CONSULT DCL FOR CERTIFIED DRAWINGS.

OPTIONS:

VENTING KIT

END OF TRAVEL LIMIT SWITCHES

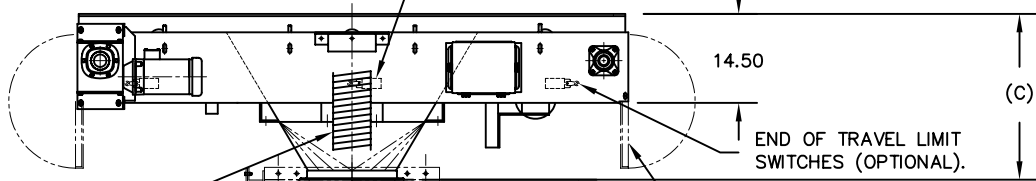
PRE-WIRED ELECTRICAL ENCLOSURE

*ESTIMATED WEIGHTS DO NOT INCLUDE OPTIONAL EQUIPMENT OR ELECTRICAL COMPONENTS.

1 HP WORM GEAR DRIVE W/TORQUE LIMITING SLIP CLUTCH & DUAL CHAIN DRIVE (TYP BOTH DIR).

RETURN TO CENTER LIMIT SWITCHES BOTH DIRECTIONS (OPTIONAL)

VENTING KIT (OPTIONAL)
6.00 DIA W/(6) 0.28 DIA HOLES ON A 7.31 DIA BC
8.00 DIA W/(6) 0.38 DIA HOLES ON A 9.56 DIA BC
(SELECTED AS REQUIRED BY LOADING SPOUT).



FLEX HOSE INCLUDED WITH OPTIONAL VENTING KIT OR SUPPLIED BY OTHERS.

14.00 DIA HOPPER DISCHARGE FOR DIRECT MOUNTING TO LOADING SPOUT.

STANDARD MODEL 24 DUST OUTLET. SPECIAL OUTLET REQUIRED FOR 32 SPOUT. SIDE DISCHARGE OUTLET REQUIRED FOR UN800.

DCL LOADING SPOUT MODEL 20, 24, 32, UN800

LOADING SPOUT SHOWN FOR REFERENCE ONLY

REV	DATE	BY	DCL		SPECIALISTS IN ADVANCED DESIGN LOADING SYSTEMS		P.O. BOX 125 CHARLEVOIX, MICHIGAN 49720 (231) 547-5600	
			TOLERANCES UNLESS OTHERWISE SPECIFIED		DRAWN BY: RB		SCALE: NONE	
			FRACTIONAL: 1/16"		CHECKED BY: ENG		DATE: 02-14-02	
			DECIMAL: .06		TITLE: HPD DUAL DIRECTION POSITIONER		DRAWING No: HPD-10001	
			ANGULAR: 1/2					