

TYPICAL PRODUCT BAG DIMENSIONS. CUSTOMER TO CONFIRM THESE DIMENSIONS.

MODEL	BAG SIZE	A	B	C	D	E	F	G	H	EST WGT
FBFS25	25 CU FT	44.00	29.00	81.38	60.00	60.00	64.00	90.38	84.50	2327 LB*
FBFS30	30 CU FT	44.00	34.00	81.38	60.00	60.00	69.00	95.38	89.50	2375 LB*
FBFS35	35 CU FT	44.00	40.00	81.38	60.00	60.00	75.00	101.38	95.50	2433 LB*
FBFS40	40 CU FT	44.00	46.00	81.38	60.00	60.00	81.00	107.38	101.50	2490 LB*
FBFS45	45 CU FT	44.00	52.00	81.38	60.00	60.00	87.00	113.38	107.50	2548 LB*
FBFS50	50 CU FT	44.00	57.00	81.38	60.00	60.00	92.00	118.38	112.50	2596 LB*
FBFS55	55 CU FT	44.00	63.00	81.38	60.00	60.00	98.00	124.38	118.50	2654 LB*
FBFS60	60 CU FT	44.00	69.00	81.38	60.00	60.00	104.00	130.38	124.50	2709 LB*

GENERAL NOTES:

FRAME CONSTRUCTION IS STRUCTURAL STEEL TUBING. STANDARD CONSTRUCTION IS MILD STEEL. STAINLESS STEEL IS OPTIONAL.

METAL SURFACES ARE POWER TOOL CLEANED, PRIMED, AND FINISHED WITH INDUSTRIAL ENAMEL.

FULL-UP, FULL-DOWN LIMIT SWITCHES ARE STANDARD. AN INTERMEDIATE-POSITION SWITCH IS OPTIONAL.

ELECTRICAL COMPONENTS AND ENCLOSURES ARE AVAILABLE IN NEMA 4, 4X, 7, AND 9.

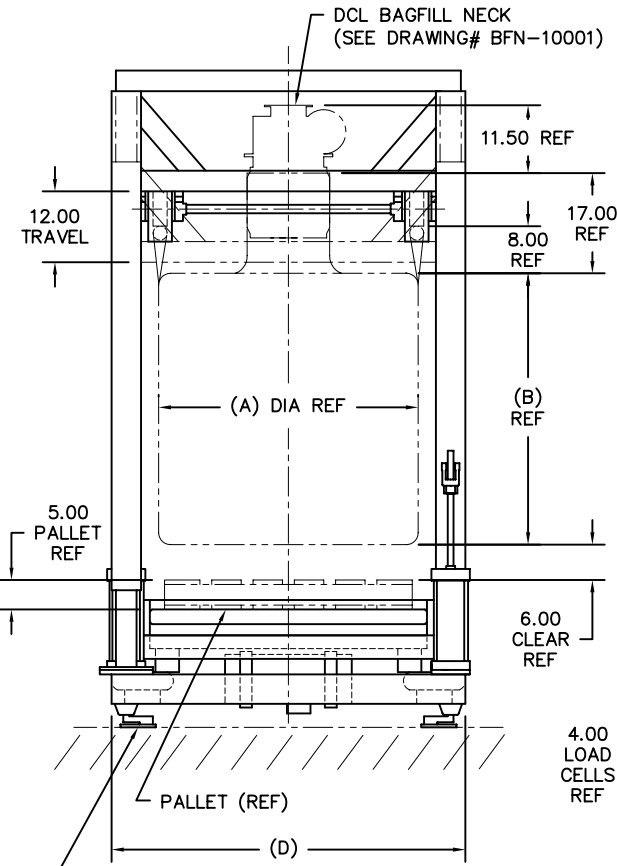
SPECIFICATIONS AND/OR DIMENSIONAL DATA ARE SUBJECT TO CHANGE. CONSULT DCL FOR CERTIFIED DRAWINGS.

ROLLER CONVEYOR, TILT ROLLER CONVEYOR, VIBRATING TABLE, AND POWERED BAG STRAP HOOKS ARE OPTIONAL.

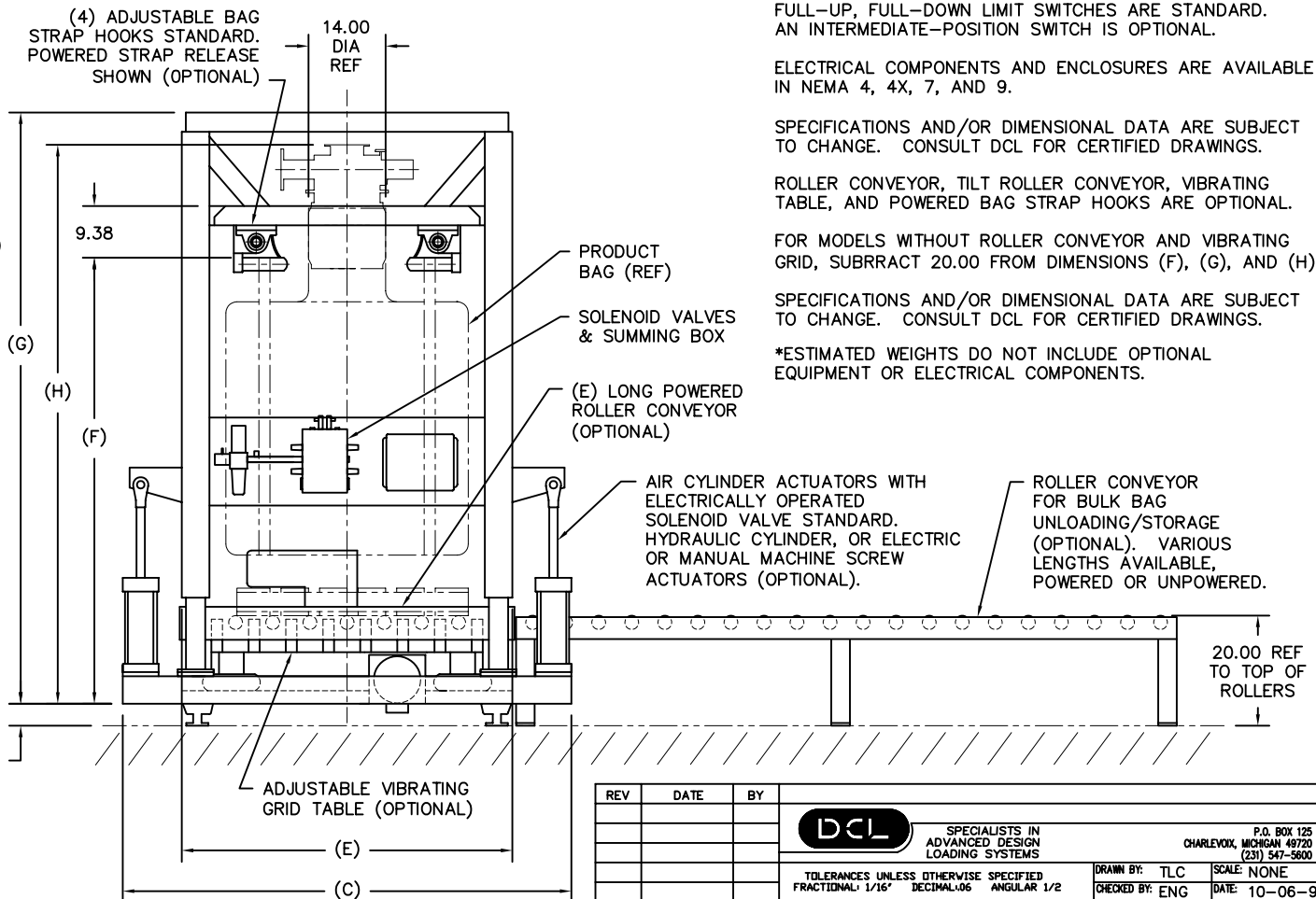
FOR MODELS WITHOUT ROLLER CONVEYOR AND VIBRATING GRID, SUBTRACT 20.00 FROM DIMENSIONS (F), (G), AND (H).

SPECIFICATIONS AND/OR DIMENSIONAL DATA ARE SUBJECT TO CHANGE. CONSULT DCL FOR CERTIFIED DRAWINGS.

*ESTIMATED WEIGHTS DO NOT INCLUDE OPTIONAL EQUIPMENT OR ELECTRICAL COMPONENTS.



(4) LOAD CELLS PROVIDED AS STANDARD. PLATFORM WEIGH SCALE (OPTIONAL).



REV	DATE	BY	DCL		SPECIALISTS IN ADVANCED DESIGN LOADING SYSTEMS		P.O. BOX 125 CHARLEVOIX, MICHIGAN 49720 (231) 547-5600	
			TOLERANCES UNLESS OTHERWISE SPECIFIED		FRACTIONAL 1/16" DECIMAL .06 ANGULAR 1/2		DRAWN BY: TLC	SCALE: NONE
			CHECKED BY: ENG		DATE: 10-06-92		TITLE: FBFS FOUR POST BAGFILL STATION	
A	10-07-02	TLC	DRAWING No: FBFS-10001					