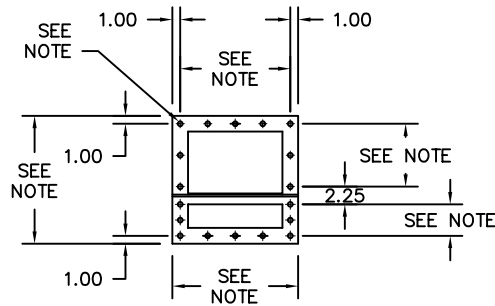
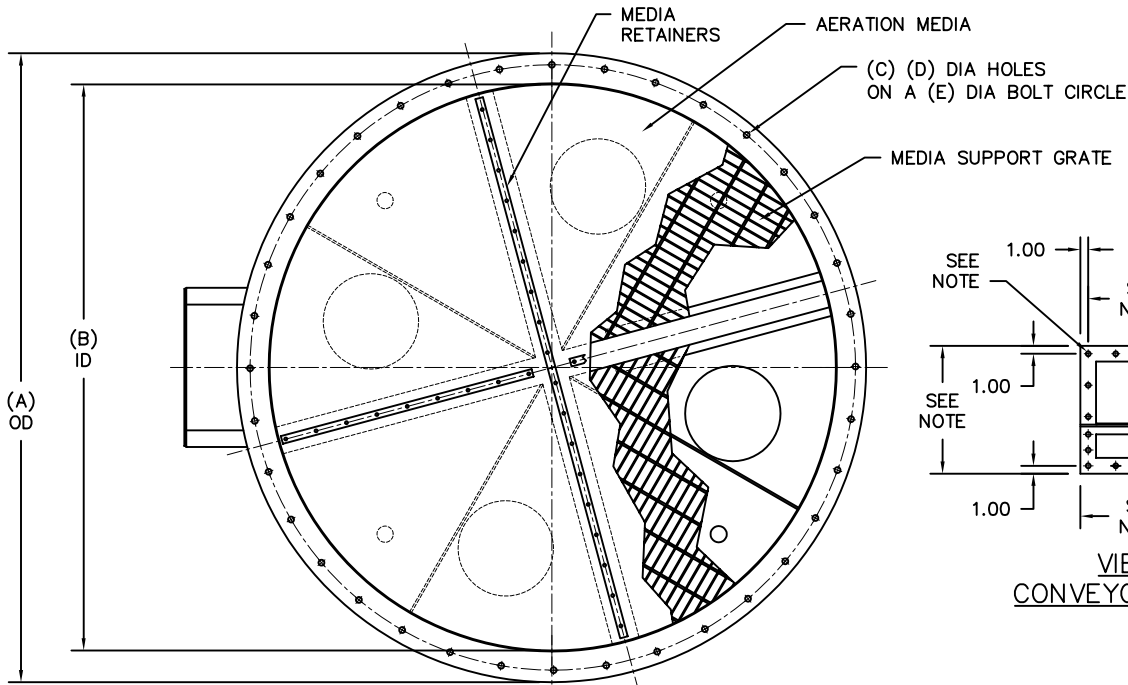
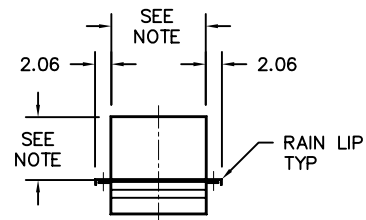
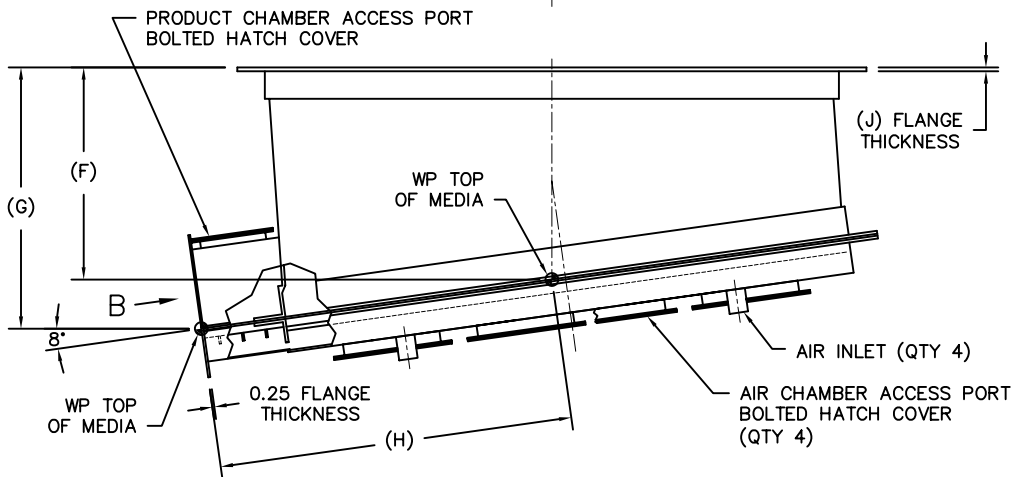


MODEL	A	B	C	D	E	F	G	H	J	EST WGT
FBB02	29.00	24.00	24	0.56	27.00	C/F	C/F	24.00	0.38	C/F
FBB03	42.00	36.00	C/F	C/F	39.00	C/F	C/F	29.00	0.38	C/F
FBB04	56.00	48.00	24	0.81	52.00	C/F	C/F	34.00	0.38	C/F
FBB05	68.00	60.00	36	0.56	64.00	14.69	20.31	40.00	0.38	C/F
FBB06	80.00	72.00	30	0.81	76.00	27.00	33.25	45.00	0.38	C/F
FBB08	108.00	96.00	36	0.88	102.00	17.81	23.62	56.00	0.50	C/F
FBB10	136.00	120.00	30	1.12	128.00	C/F	C/F	66.00	0.50	C/F
FBB12	162.00	144.00	C/F	C/F	153.00	C/F	C/F	77.00	0.50	C/F
FBB14	198.00	168.00	C/F	C/F	178.00	C/F	C/F	88.00	0.50	C/F
FBB16	216.00	192.00	C/F	C/F	204.00	C/F	C/F	99.00	0.50	C/F



VIEW B
CONVEYOR FLANGE



TYPICAL CONVEYOR
BODY SECTION

GENERAL NOTES:

CONSTRUCTION IS MILD STEEL. ABRASION RESISTANT OR STAINLESS STEEL CONSTRUCTION IS OPTIONAL.

MEDIA SUPPORT IS 0.13 x 1.00 BAR GRATING WITH 1.00 CENTERS.

STANDARD AERATION MEDIA IS 0.25 NEEDED POLYESTER RATED AT 310° MAXIMUM TEMPERATURE. OTHER MEDIA TYPES ARE OPTIONAL. STAINLESS STEEL MESH COVERING IS ALSO AVAILABLE.

STANDARD AIR INLET IS 2.00 NPT, WITH A MANUAL BALANCE VALVE AS OPTIONAL. 3.00 & 4.00 INLETS, 150# FLANGES, BUTTERFLY VALVES, AND AIR HEADERS ARE OPTIONAL.

AIR HEADER DUMP VALVE (TO PURGE RESIDUAL AERATION PRESSURE WHEN LOADING IS COMPLETE) IS OPTIONAL.

NEOPRENE OR SILICONE GASKETS ARE AVAILABLE FOR ALL FLANGE CONNECTIONS. OTHER GASKET MATERIALS OPTIONAL.

LOW AND HIGH TOP PRODUCT OUTLETS ARE AVAILABLE. SEE FLUIDIZED CONVEYOR DRAWINGS FOR AVAILABLE FLANGE PATTERNS AND CROSS SECTION DIMENSIONS.

METAL SURFACES ARE ETCHED, PRIMED, AND FINISHED WITH INDUSTRIAL ENAMEL.

SPECIFICATIONS AND/OR DIMENSIONAL DATA ARE SUBJECT TO CHANGE. CONSULT DCL FOR CERTIFIED DRAWINGS.

C/F = CONSULT FACTORY

REV	DATE	BY	DCL		SPECIALISTS IN ADVANCED DESIGN LOADING SYSTEMS		P.O. BOX 125 CHARLEVOIX, MICHIGAN 49720 (231) 547-5600		
			TOLERANCES UNLESS OTHERWISE SPECIFIED		FRACTIONAL: 1/16"		DECIMAL: .06		
			ANGULAR: 1/2		DRAWN BY: TLC		SCALE: NONE		
			TITLE		CHECKED BY: ENG		DATE: 10-06-92		
A	05-08-02	TLC	FBB FLUIDIZED BIN BOTTOM				DRAWING No: FBB-10002		