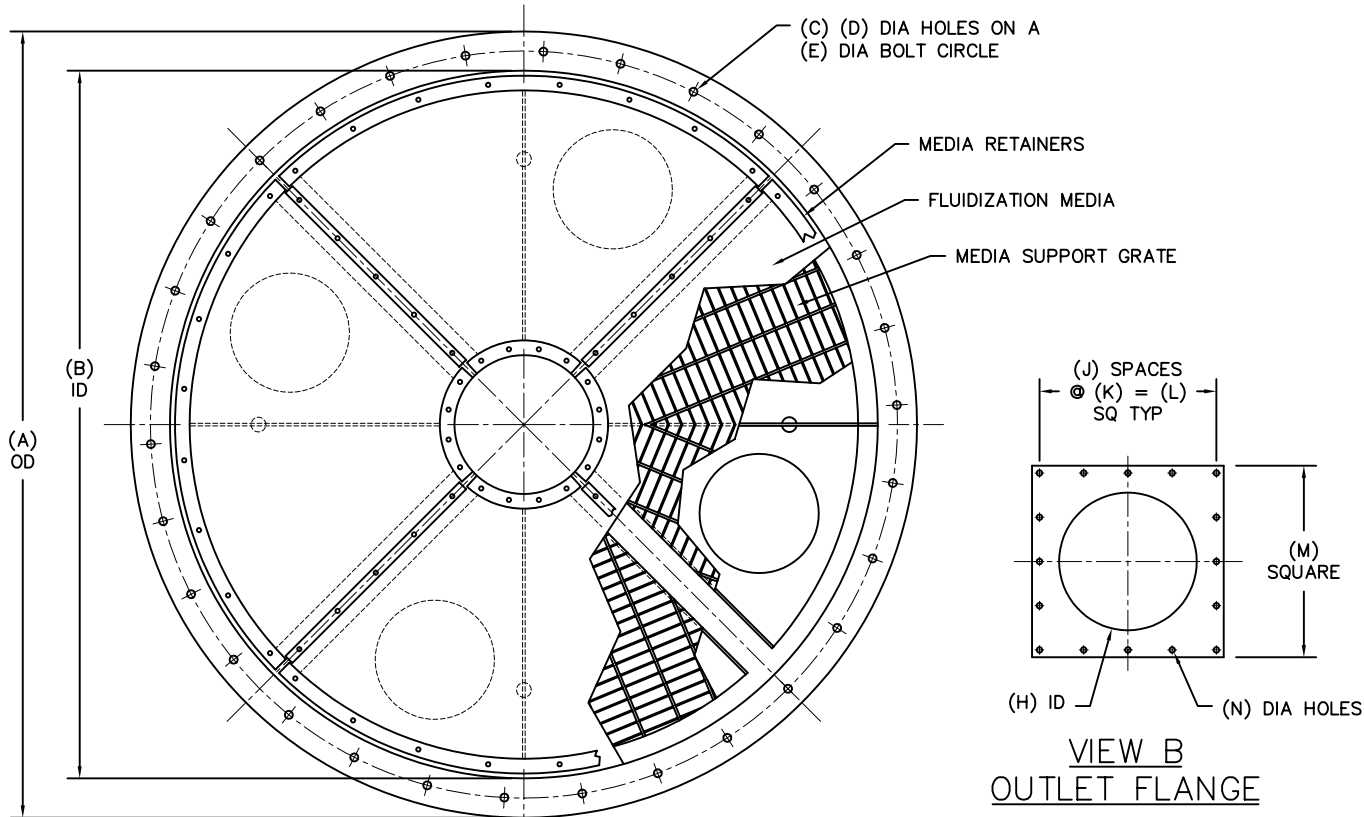


MODEL	A	B	C	D	E	F	G	H	J	K	L	M	N	P	EST WGT
FBB02	29.00	24.00	24	0.56	27.00	C/F	C/F	14.00	4	4.50	18.00	19.50	0.56	0.38	C/F
FBB03	C/F	36.00	C/F	C/F	C/F	C/F	C/F	14.00	4	4.50	18.00	19.50	0.56	0.38	C/F
FBB04	56.00	48.00	24	0.81	52.00	7.00	12.00	14.00	4	4.50	18.00	19.50	0.56	0.38	C/F
FBB05	68.00	60.00	36	0.56	64.00	C/F	C/F	14.00	4	4.50	18.00	19.50	0.56	0.38	C/F
FBB06	80.00	72.00	30	0.81	76.00	8.50	20.00	14.00	4	4.50	18.00	19.50	0.56	0.38	C/F
FBB08	108.00	96.00	36	0.88	102.00	13.25	20.50	14.00	4	4.50	18.00	19.50	0.56	0.50	C/F
FBB10	C/F	120.00	30	1.12	C/F	18.00	36.00	14.00	4	4.50	18.00	19.50	0.56	0.50	C/F
FBB12	C/F	144.00	C/F	C/F	C/F	C/F	C/F	14.00	4	4.50	18.00	19.50	0.56	0.50	C/F
FBB14	C/F	168.00	C/F	C/F	C/F	C/F	C/F	14.00	4	4.50	18.00	19.50	0.56	0.50	C/F
FBB16	C/F	192.00	C/F	C/F	C/F	C/F	C/F	14.00	4	4.50	18.00	19.50	0.56	0.50	C/F



**GENERAL NOTES:**

CONSTRUCTION IS MILD STEEL. ABRASION RESISTANT OR STAINLESS STEEL CONSTRUCTION IS OPTIONAL.

MEDIA SUPPORT IS 0.13 x 1.00 BAR GRATING WITH 1.00 CENTERS.

STANDARD AERATION MEDIA IS 0.25 NEEDED POLYESTER RATED AT 310° MAXIMUM TEMPERATURE. OTHER MEDIA TYPES ARE OPTIONAL. STAINLESS STEEL MESH COVERING IS ALSO AVAILABLE.

STANDARD AIR INLET IS 2.00 NPT, WITH A MANUAL BALANCE VALVE AS OPTIONAL. 3.00 & 4.00 INLETS, 150# FLANGES, BUTTERFLY VALVES, AND AIR HEADERS ARE OPTIONAL.

AIR HEADER DUMP VALVE (TO PURGE RESIDUAL AERATION PRESSURE WHEN LOADING IS COMPLETE) IS OPTIONAL.

NEOPRENE OR SILICONE GASKETS ARE AVAILABLE FOR ALL FLANGE CONNECTIONS. OTHER GASKET MATERIALS OPTIONAL.

ROUND OR RECTANGULAR PRODUCT OUTLETS ARE AVAILABLE. SPECIAL BOLT PATTERNS ARE OPTIONAL.

METAL SURFACES ARE ETCHED, PRIMED, AND FINISHED WITH INDUSTRIAL ENAMEL.

SPECIFICATIONS AND/OR DIMENSIONAL DATA ARE SUBJECT TO CHANGE. CONSULT DCL FOR CERTIFIED DRAWINGS.

C/F = CONSULT FACTORY

REV	DATE	BY	DCL		SPECIALISTS IN ADVANCED DESIGN LOADING SYSTEMS		P.O. BOX 125 CHARLEVOIX, MICHIGAN 49720 (231) 547-5600	
			TOLERANCES UNLESS OTHERWISE SPECIFIED		DRAWN BY: TLC		SCALE: NONE	
			FRACTIONAL: 1/16"		CHECKED BY: ENG		DATE: 10-06-92	
			DECIMAL: .06		TITLE: FBB FLUIDIZED BIN BOTTOM		DRAWING No: FBB-10001	
			ANGULAR: 1/2		A		05-07-02 TLC	