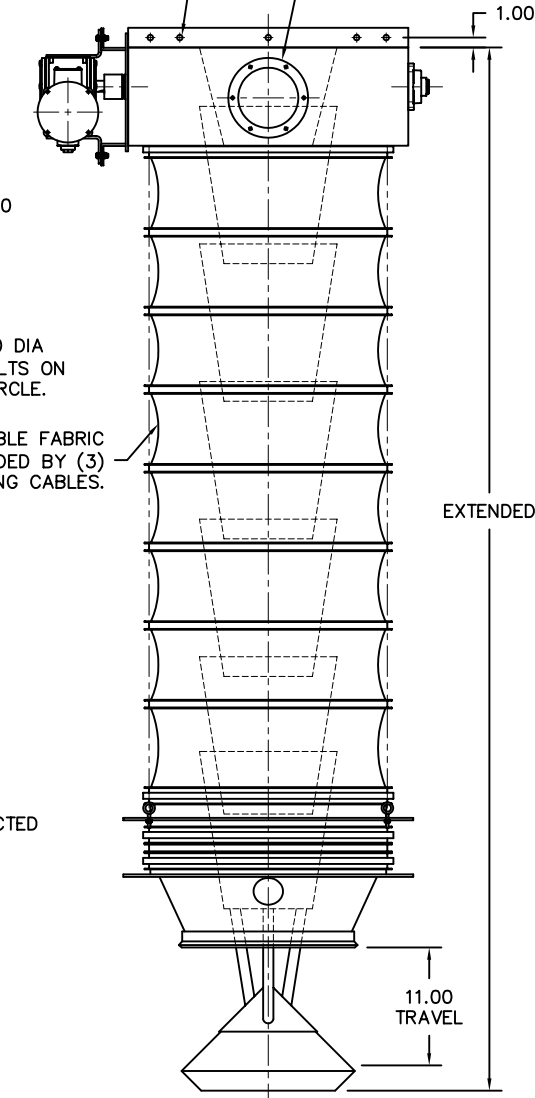


SIDE DUST OUTLET 6.13 DIA
WITH (6) 0.31 HOLES ON
A 7.31 BOLT CIRCLE.

(10) 0.44 DIA
MOUNTING HOLES



COLLAPSIBLE FABRIC
SLEEVE GUIDED BY (3)
LIFTING CABLES.

MODEL	TRAVEL	RETR	EXTD	URE WGT	STL WGT	URE HP	STL HP
EV24-02	24.00	44.50	68.50	628 LB*	677 LB*	1 HP	1 HP
EV24-04	48.00	47.50	95.50	653 LB*	735 LB*	1 HP	1 HP
EV24-06	72.00	50.50	122.50	679 LB*	793 LB*	1 HP	1 HP/B
EV24-08	96.00	54.50	150.50	707 LB*	855 LB*	1 HP	1 HP/B
EV24-10	120.00	58.50	178.50	737 LB*	918 LB*	1 HP	1.5 HP/B
EV24-12	144.00	62.50	206.50	762 LB*	976 LB*	1 HP/B	1.5 HP/B
EV24-14	168.00	66.50	234.50	791 LB*	1038 LB*	1 HP/B	2 HP/B
EV24-16	192.00	70.50	262.50	817 LB*	1097 LB*	1.5 HP/B	2 HP/B
EV24-18	216.00	74.50	290.50	847 LB*	1159 LB*	1.5 HP/B	1.5 HP/D

GENERAL NOTES:

LOADING CAPACITY: 200 CFM
AVERAGE AIR WITHDRAWAL: 800 TO 1000 CFM
LIFTING SPEED: 16 FPM AVG

ALL INDUSTRIAL VOLTAGES ARE AVAILABLE FOR ELECTRICAL COMPONENTS.

PREWIRING OF ELECTRICAL COMPONENTS TO SPOUT FRAME JUNCTION BOX OPTIONAL.

ELECTRICAL ENCLOSURES NEMA 4 STANDARD. NEMA 4X, 7, AND 9 OPTIONAL.

COLLAPSIBLE FABRIC SLEEVE CAN BE CONSTRUCTED OF URETHANE/NYLON, HYPALON/NYLON, OR A NUMBER OF OTHER FABRICS. SLEEVES COME STANDARD WITH ALUMINUM OUTER AND INNER RINGS STANDARD.

METAL SURFACES ARE POWER TOOL CLEANED, PRIMED, AND FINISHED WITH INDUSTRIAL ENAMEL.

LOADING CAPACITY LISTED IS APPROXIMATE AND BASED ON FREE FLOWING PRODUCTS. CONSULT DCL FOR ACTUAL REQUIREMENTS.

AIR WITHDRAWAL REQUIREMENTS ARE AVERAGE. CONSULT DCL FOR FINAL RECOMMENDATIONS.

SPECIFICATIONS AND/OR DIMENSIONAL DATA ARE SUBJECT TO CHANGE. CONSULT DCL FOR CERTIFIED DRAWINGS.

CONE CONSTRUCTION NOTES: CONTAINED INNER DESIGN STANDARD WITH 0.13 AR STEEL, AND 0.13 304 OR 316 STAINLESS STEEL. OTHER MATERIALS AVAILABLE TO SUIT APPLICATION.

OPTIONS:

150# INLET FLANGE. ADDS 3.00 TO RETRACTED HEIGHT.

LEVEL SENSORS; TILT PROBE, RF PROBE, CAPACITANCE PROBE, PNEUMATIC PROBE.

AIR VIBRATOR KIT REQUIRES (40) CFM @ (80) PSI.

*ESTIMATED WEIGHTS DO NOT INCLUDE OPTIONAL EQUIPMENT OR ELECTRICAL COMPONENTS.

REV	DATE	BY	DCL		SPECIALISTS IN ADVANCED DESIGN LOADING SYSTEMS		P.O. BOX 125 CHARLEVOIX, MICHIGAN 49720 (231) 547-5600	
			TOLERANCES UNLESS OTHERWISE SPECIFIED		DRAWN BY: JNM		SCALE: NONE	
			FRACTIONAL: 1/16" DECIMAL: .06 ANGULAR: 1/2		CHECKED BY: ENG		DATE: 10-04-00	
TITLE			EV24 LOADING SPOUT (SELF SEALING)			DRAWING No: EV24-10002		
A	09-25-07	JNM						