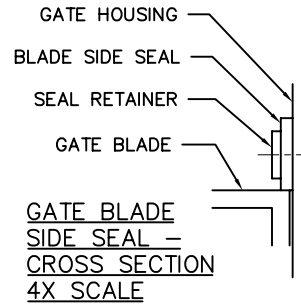
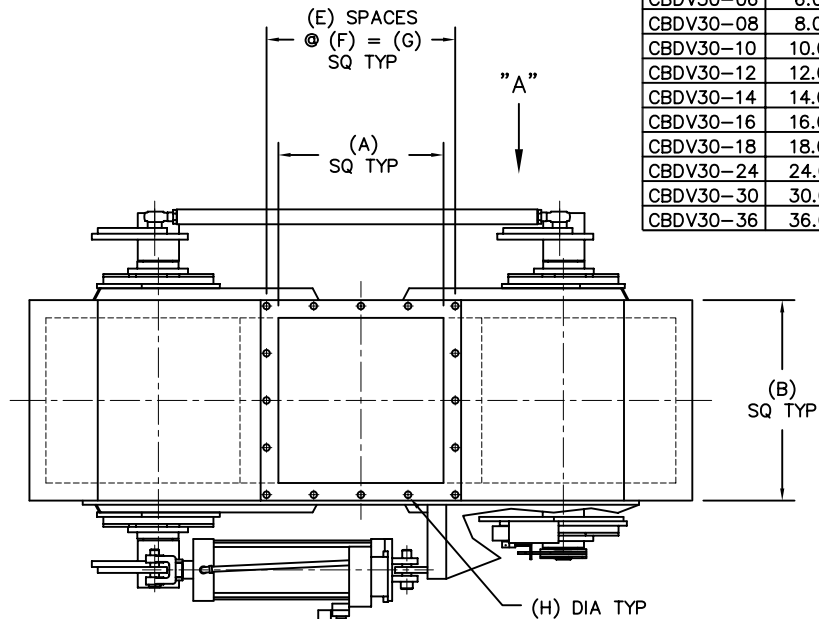


MODEL	A	B	C	D	E	F	G	H	J	K	L	EST WGT
CBDV30-06	6.00	9.00	16.00	6.94	2	4.00	8.00	0.63	15.00	13.88	12.00	230 LB*
CBDV30-08	8.00	11.00	18.00	8.00	2	5.00	10.00	0.63	17.75	16.00	13.88	321 LB*
CBDV30-10	10.00	13.00	21.50	9.50	2	6.00	12.00	0.63	22.50	19.00	16.44	345 LB*
CBDV30-12	12.00	15.00	24.50	11.13	2	7.00	14.00	0.63	25.50	22.25	19.25	470 LB*
CBDV30-14	14.00	17.00	27.50	13.00	4	4.00	16.00	0.63	28.00	26.00	22.50	768 LB*
CBDV30-16	16.00	20.00	31.75	14.88	4	4.50	18.00	0.63	32.25	29.75	25.75	897 LB*
CBDV30-18	18.00	22.00	34.00	16.13	4	5.00	20.00	0.63	37.50	32.25	27.94	1294 LB*
CBDV30-24	24.00	28.00	42.25	21.00	4	6.50	26.00	0.63	49.00	42.00	36.38	C/F
CBDV30-30	30.00	36.00	51.75	25.25	5	6.75	33.75	0.63	60.00	50.50	43.75	C/F
CBDV30-36	36.00	42.00	60.00	29.00	6	6.63	39.75	0.63	73.00	58.00	50.25	C/F



GENERAL NOTES:

HOUSING, BLADE, AND SEAL RETAINERS ARE MILD STEEL. ABRASION RESISTANT OR STAINLESS STEEL IS OPTIONAL.

AVAILABLE BLADE SEALS ARE URETHANE, SILICONE, VITON, OR HIGH-TEMPERATURE RUBBER BELTING. OTHER MATERIALS ARE AVAILABLE UPON REQUEST.

METAL SURFACES ARE POWER TOOL CLEANED, PRIMED, AND FINISHED WITH INDUSTRIAL ENAMEL.

FULL-OPEN AND FULL-CLOSED LIMIT SWITCHES ARE OPTIONAL, AND ARE AVAILABLE IN NEMA 4, 4X, 7, AND 9.

LENGTH AND CAPACITY OF ACTUATOR TO BE DETERMINED UPON APPLICATION.

SPECIFICATIONS AND/OR DIMENSIONAL DATA ARE SUBJECT TO CHANGE. CONSULT DCL FOR CERTIFIED DRAWINGS.

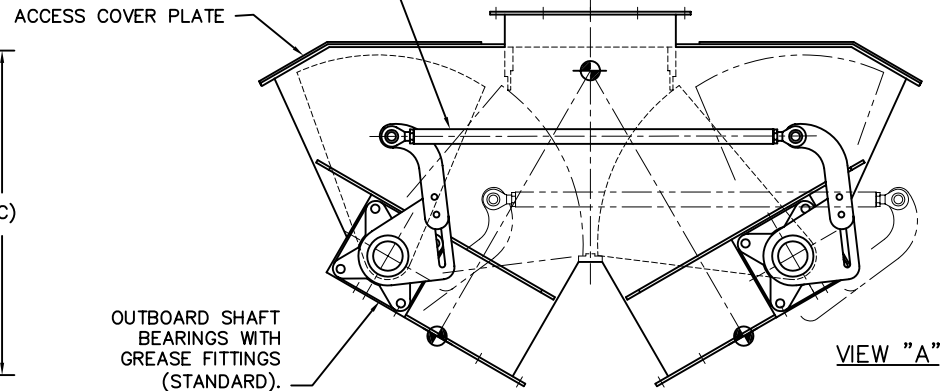
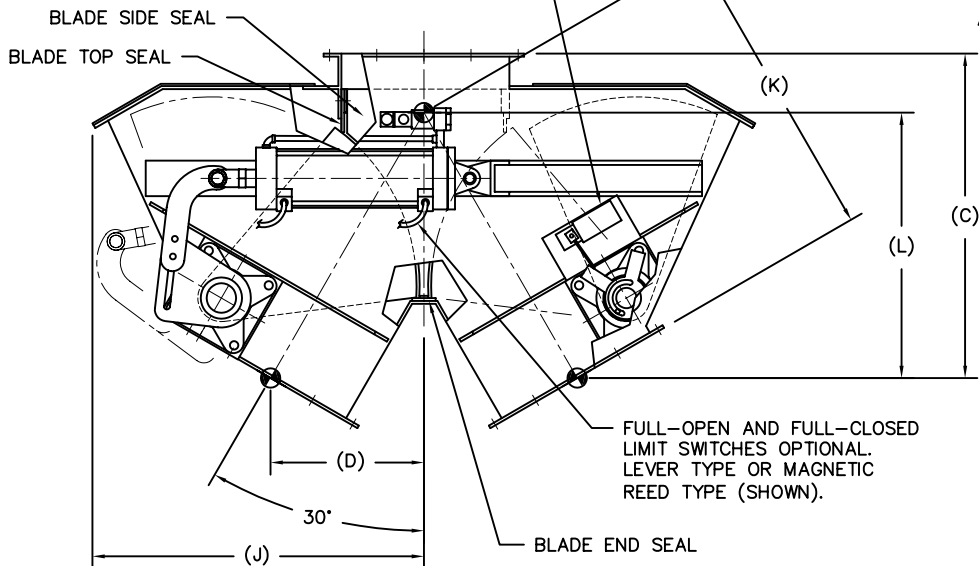
C/F = CONSULT FACTORY

*ESTIMATED WEIGHTS DO NOT INCLUDE ACTUATOR OR ELECTRICAL COMPONENTS.

4-WAY, 2-POSITION SOLENOID VALVE, PRE-PIPED AND MOUNTED TO CYLINDER. AVAILABLE IN NEMA 4, 4X, 7, AND 9.

AVAILABLE WITH DUAL ACTUATORS/LIMITS FOR INDEPENDENT BLADE OPERATION (CAN BE USED FOR TOTAL SHUTOFF), OR TANDEM OPERATION BAR (SHOWN) FOR SIMULTANEOUS BLADE OPERATION (CAN BE USED FOR DIVERTING ONLY).

OPTIONAL LEVER TYPE LIMIT SWITCHES SHOWN. AVAILABLE IN 2-POSITION (PAIR OF SWITCHES) OR 3-POSITION (SINGLE SWITCH, SHOWN).



REV	DATE	BY	DCL		SPECIALISTS IN ADVANCED DESIGN LOADING SYSTEMS		P.O. BOX 125 CHARLEVOIX, MICHIGAN 49720 (231) 547-5600	
			TOLERANCES UNLESS OTHERWISE SPECIFIED		FRACTIONAL: 1/16"		DECIMAL: .06	
					ANGULAR: 1/2			
			TITLE		DRAWN BY: TLC		SCALE: NONE	
					CHECKED BY: ENG		DATE: 10-06-92	
A	01-30-02	TLC	CBD CURVED BLADE DIVERTER VALVE				DRAWING No: CBD-10001	