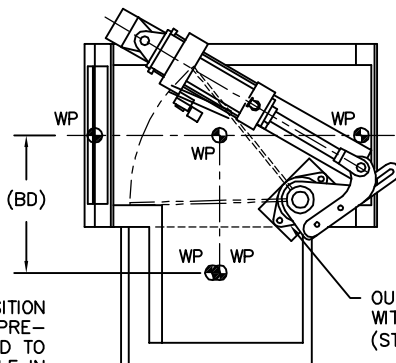
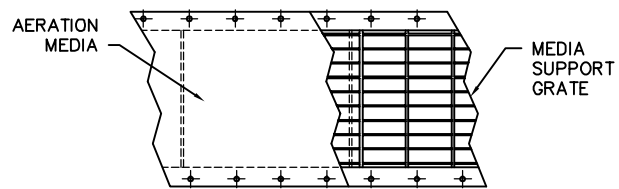
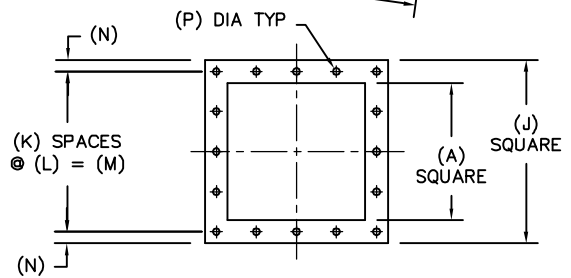
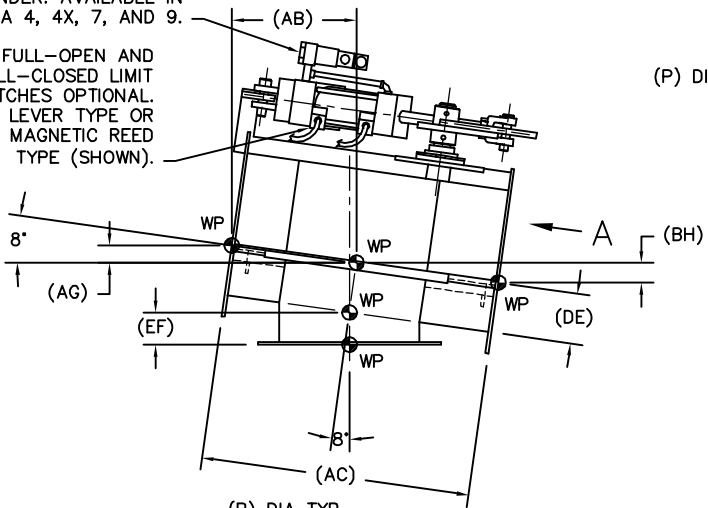


MODEL	A	B	D	E	F	G	H	J	K	L	M	N	P	AB	AC	AG	BC	BD	BH	DE	EF	EST WGT
SDGA6X6	6.00	6.00	14.25	2	3.00	6.00	1.00	10.00	2	4.00	8.00	1.00	0.56	8.00	16.00	1.11	8.00	6.00	1.11	4.44	2.43	90 LB*
SDGA8X8	8.00	8.00	16.25	2	4.00	8.00	1.00	12.00	2	5.00	10.00	1.00	0.56	9.00	18.00	1.25	9.00	8.00	1.25	4.44	2.56	120 LB*
SDGA10X10	10.00	10.00	18.25	2	5.00	10.00	1.00	14.00	3	4.00	12.00	1.00	0.56	10.00	20.00	1.39	10.00	10.00	1.39	4.44	2.68	145 LB*
SDGA12X12	12.00	12.00	20.25	3	4.00	12.00	1.00	16.00	4	3.50	14.00	1.00	0.56	11.00	23.50	1.53	12.50	12.00	1.74	4.44	2.81	195 LB*
SDGA14X14	14.00	14.00	22.25	4	3.50	14.00	1.00	18.00	4	4.00	16.00	1.00	0.56	12.00	25.50	1.67	13.50	14.00	1.88	4.44	2.93	240 LB*
SDGA16X16	16.00	16.00	24.25	4	4.00	16.00	1.00	20.00	4	4.50	18.00	1.00	0.56	13.00	27.50	1.80	14.50	16.00	2.02	4.44	3.12	310 LB*
SDGA18X18	18.00	18.00	26.25	4	4.50	18.00	1.00	22.00	4	5.00	20.00	1.00	0.56	14.00	31.00	1.95	17.00	18.00	2.36	4.44	3.25	355 LB*
SDGA20X20	20.00	20.00	28.25	4	5.00	20.00	1.00	24.00	4	5.50	22.00	1.00	0.56	15.00	33.00	2.08	18.00	20.00	2.50	4.44	3.37	440 LB*
SDGA22X22	22.00	22.00	30.25	4	5.50	22.00	1.00	26.00	4	6.00	24.00	1.00	0.56	16.00	35.00	2.22	19.00	22.00	2.64	4.44	3.56	485 LB*
SDGA24X24	24.00	24.00	32.25	4	6.00	24.00	1.00	28.00	4	6.50	26.00	1.00	0.56	17.00	37.00	2.36	20.00	24.00	2.78	4.44	3.68	570 LB*

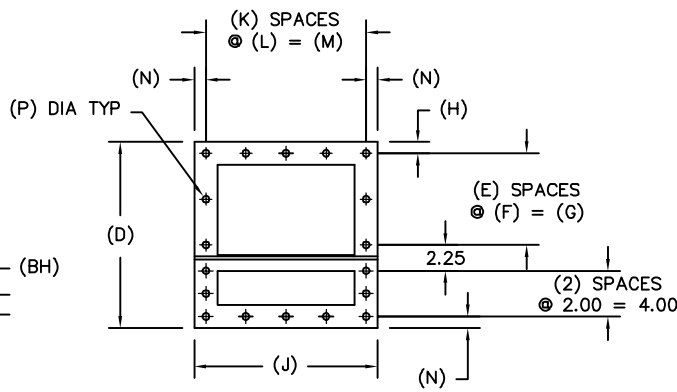


4-WAY, 2-POSITION SOLENOID VALVE, PRE-PIPED AND MOUNTED TO CYLINDER. AVAILABLE IN NEMA 4, 4X, 7, AND 9.

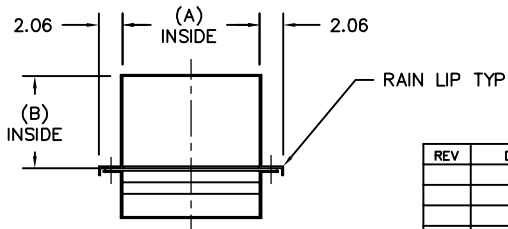
FULL-OPEN AND FULL-CLOSED LIMIT SWITCHES OPTIONAL. LEVER TYPE OR MAGNETIC REED TYPE (SHOWN).



VIEW OF AIR CHAMBER



VIEW A
TYPICAL FLANGE DETAIL



TYPICAL BODY SECTION

GENERAL NOTES:

PRODUCT AND AIR CHAMBER CONSTRUCTION IS 11 GA MILD STEEL. ABRASION RESISTANT OR STAINLESS STEEL CONSTRUCTION IS OPTIONAL.

AVAILABLE BLADE SEALS ARE URETHANE, SILICONE, VITON, OR HIGH-TEMPERATURE RUBBER BELTING. OTHER MATERIALS ARE AVAILABLE UPON REQUEST.

HOUSING, BLADE, AND SEAL RETAINERS ARE MILD STEEL. ABRASION RESISTANT OR STAINLESS STEEL IS OPTIONAL.

ALL MATING FLANGES ARE 0.25 PLATE.

MEDIA SUPPORT IS 0.13 x 1.00 BAR GRATING WITH 1.00 CENTERS.

STANDARD AERATION MEDIA IS 0.25 NEEDLED POLYESTER RATED AT 310° F MAXIMUM TEMPERATURE. OTHER MEDIA TYPES ARE OPTIONAL. STAINLESS STEEL MESH COVERING IS ALSO AVAILABLE.

LENGTH AND CAPACITY OF ACTUATOR TO BE DETERMINED UPON APPLICATION.

FULL-OPEN AND FULL-CLOSED LIMIT SWITCHES ARE OPTIONAL, AND ARE AVAILABLE IN NEMA 4, 4X, 7, AND 9.

NEOPRENE OR SILICONE GASKETS ARE AVAILABLE FOR ALL FLANGE CONNECTIONS. OTHER GASKET MATERIALS OPTIONAL.

ROUND OR RECTANGULAR PRODUCT INLETS AND OUTLETS ARE AVAILABLE. SPECIAL BOLT PATTERNS ARE OPTIONAL.

METAL SURFACES ARE POWER TOOL CLEANED, PRIMED, AND FINISHED WITH INDUSTRIAL ENAMEL.

SPECIFICATIONS AND/OR DIMENSIONAL DATA ARE SUBJECT TO CHANGE. CONSULT DCL FOR CERTIFIED DRAWINGS.

*ESTIMATED WEIGHTS DO NOT INCLUDE ACTUATOR OR ELECTRICAL COMPONENTS.

REV	DATE	BY	DCL		SPECIALISTS IN ADVANCED DESIGN LOADING SYSTEMS		P.O. BOX 125 CHARLEVOIX, MICHIGAN 49720 (231) 547-5600		
			TOLERANCES UNLESS OTHERWISE SPECIFIED		DRAWN BY: TLC		SCALE: NONE		
			FRACTIONAL: 1/16" DECIMAL: .06 ANGULAR: 1/2		CHECKED BY: ENG		DATE: 10-06-92		
A	11-20-02	TLC	TITLE: SDG SIDE DIVERTER GATE (HIGH TOP)				DRAWING No: SDGA-10002		