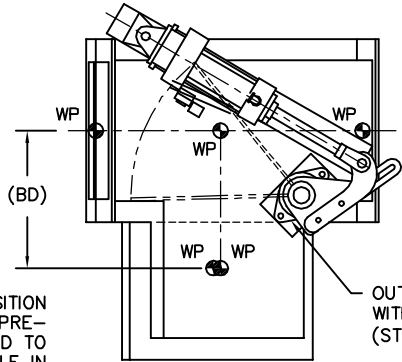


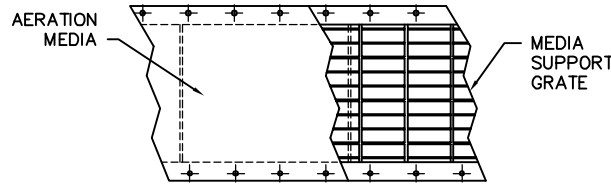
MODEL	A	B	D	E	F	G	H	J	K	L	M	N	P	AB	AC	AG	BC	BD	BH	DE	EF	EST WGT
SDGA6X4	6.00	4.00	12.25	1	4.00	4.00	1.00	10.00	2	4.00	8.00	1.00	0.56	8.00	16.00	1.11	8.00	6.00	1.11	4.44	2.43	80 LB*
SDGA8X6	8.00	6.00	14.25	2	3.00	6.00	1.00	12.00	2	5.00	10.00	1.00	0.56	9.00	18.00	1.25	9.00	8.00	1.25	4.44	2.56	105 LB*
SDGA10X6	10.00	6.00	14.25	2	3.00	6.00	1.00	14.00	3	4.00	12.00	1.00	0.56	10.00	20.00	1.39	10.00	10.00	1.39	4.44	2.68	135 LB*
SDGA12X8	12.00	8.00	16.25	2	4.00	8.00	1.00	16.00	4	3.50	14.00	1.00	0.56	11.00	23.50	1.53	12.50	12.00	1.74	4.44	2.81	180 LB*
SDGA14X8	14.00	8.00	16.25	2	4.00	8.00	1.00	18.00	4	4.00	16.00	1.00	0.56	12.00	25.50	1.67	13.50	14.00	1.88	4.44	2.93	220 LB*
SDGA16X10	16.00	10.00	18.25	2	5.00	10.00	1.00	20.00	4	4.50	18.00	1.00	0.56	13.00	27.50	1.80	14.50	16.00	2.02	4.44	3.12	285 LB*
SDGA18X10	18.00	10.00	18.25	2	5.00	10.00	1.00	22.00	4	5.00	20.00	1.00	0.56	14.00	31.00	1.95	17.00	18.00	2.36	4.44	3.25	335 LB*
SDGA20X12	20.00	12.00	20.25	3	4.00	12.00	1.00	24.00	4	5.50	22.00	1.00	0.56	15.00	33.00	2.08	18.00	20.00	2.50	4.44	3.37	395 LB*
SDGA22X12	22.00	12.00	20.25	3	4.00	12.00	1.00	26.00	4	6.00	24.00	1.00	0.56	16.00	35.00	2.22	19.00	22.00	2.64	4.44	3.56	440 LB*
SDGA24X14	24.00	14.00	22.25	4	3.50	14.00	1.00	28.00	4	6.50	26.00	1.00	0.56	17.00	37.00	2.36	20.00	24.00	2.78	4.44	3.68	520 LB*



4-WAY, 2-POSITION SOLENOID VALVE, PRE-PIPED AND MOUNTED TO CYLINDER. AVAILABLE IN NEMA 4, 4X, 7, AND 9.

FULL-OPEN AND FULL-CLOSED LIMIT SWITCHES OPTIONAL. LEVER TYPE OR MAGNETIC REED TYPE (SHOWN).

OUTBOARD SHAFT BEARING WITH GREASE FITTING (STANDARD).



VIEW OF AIR CHAMBER

GENERAL NOTES:

PRODUCT AND AIR CHAMBER CONSTRUCTION IS 11 GA MILD STEEL. ABRASION RESISTANT OR STAINLESS STEEL CONSTRUCTION IS OPTIONAL.

AVAILABLE BLADE SEALS ARE URETHANE, SILICONE, VITON, OR HIGH-TEMPERATURE RUBBER BELTING. OTHER MATERIALS ARE AVAILABLE UPON REQUEST.

HOUSING, BLADE, AND SEAL RETAINERS ARE MILD STEEL. ABRASION RESISTANT OR STAINLESS STEEL IS OPTIONAL.

ALL MATING FLANGES ARE 0.25 PLATE.

MEDIA SUPPORT IS 0.13 x 1.00 BAR GRATING WITH 1.00 CENTERS.

STANDARD AERATION MEDIA IS 0.25 NEEDLED POLYESTER RATED AT 310° F MAXIMUM TEMPERATURE. OTHER MEDIA TYPES ARE OPTIONAL. STAINLESS STEEL MESH COVERING IS ALSO AVAILABLE.

LENGTH AND CAPACITY OF ACTUATOR TO BE DETERMINED UPON APPLICATION.

FULL-OPEN AND FULL-CLOSED LIMIT SWITCHES ARE OPTIONAL, AND ARE AVAILABLE IN NEMA 4, 4X, 7, AND 9.

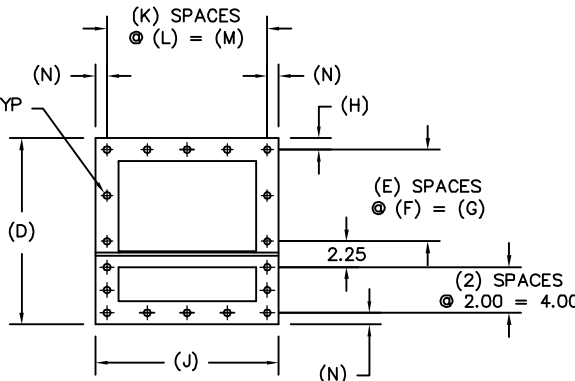
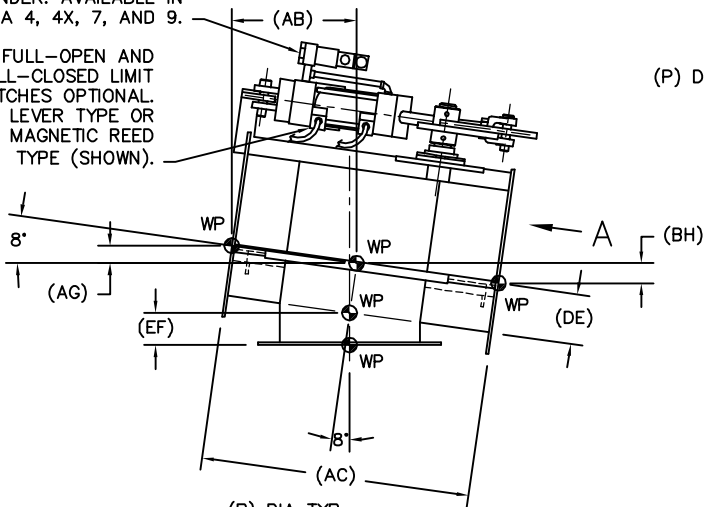
NEOPRENE OR SILICONE GASKETS ARE AVAILABLE FOR ALL FLANGE CONNECTIONS. OTHER GASKET MATERIALS OPTIONAL.

ROUND OR RECTANGULAR PRODUCT INLETS AND OUTLETS ARE AVAILABLE. SPECIAL BOLT PATTERNS ARE OPTIONAL.

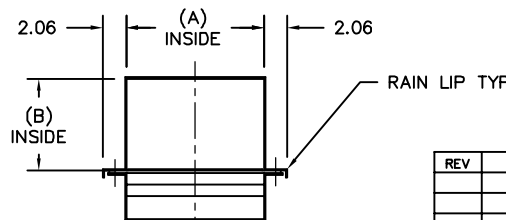
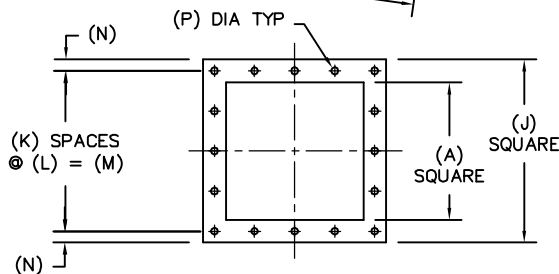
METAL SURFACES ARE POWER TOOL CLEANED, PRIMED, AND FINISHED WITH INDUSTRIAL ENAMEL.

SPECIFICATIONS AND/OR DIMENSIONAL DATA ARE SUBJECT TO CHANGE. CONSULT DCL FOR CERTIFIED DRAWINGS.

*ESTIMATED WEIGHTS DO NOT INCLUDE ACTUATOR OR ELECTRICAL COMPONENTS.



VIEW A
TYPICAL FLANGE DETAIL



TYPICAL BODY SECTION

REV	DATE	BY	DCL		SPECIALISTS IN ADVANCED DESIGN LOADING SYSTEMS		P.O. BOX 125 CHARLEVOIX, MICHIGAN 49720 (231) 547-5600	
			TOLERANCES UNLESS OTHERWISE SPECIFIED		DRAWN BY: TLC		SCALE: NONE	
			FRACTIONAL: 1/16"		CHECKED BY: ENG		DATE: 10-06-92	
			DECIMAL: .005		TITLE		DRAWING No:	
A	11-20-02	TLC	SDG SIDE DIVERTER GATE (LOW TOP)				SDGA-10001	