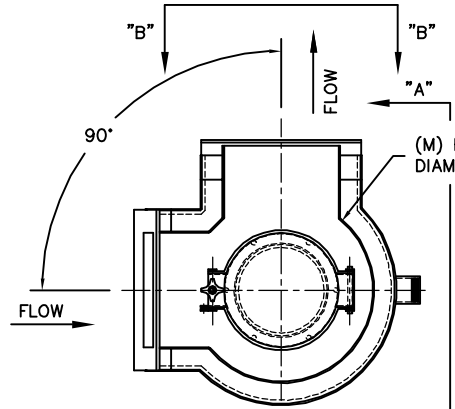
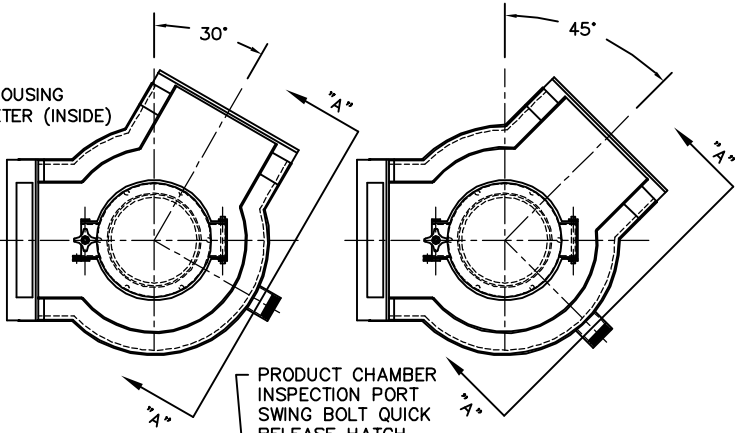


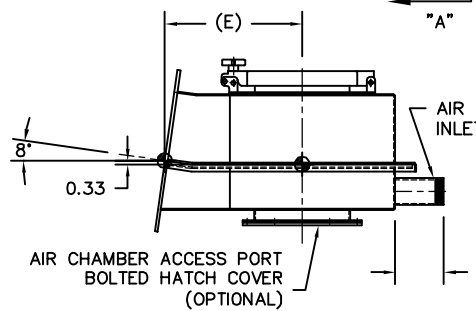
MODEL	A	B	C	D	E	F	G	H	J	K	L	M	N	EST WGT
FCTB6X6	6.00	6.00	10.00	14.25	10.00	2	4.00	8.00	2	3.00	6.00	12.00	0.56	79 LB
FCTB8X8	8.00	8.00	12.00	16.25	11.00	2	5.00	10.00	2	4.00	8.00	14.00	0.56	102 LB
FCTB10X10	10.00	10.00	14.00	18.25	12.00	3	4.00	12.00	2	5.00	10.00	16.00	0.56	124 LB
FCTB12X12	12.00	12.00	16.00	20.25	14.00	4	3.50	14.00	3	4.00	12.00	20.00	0.56	158 LB
FCTB14X14	14.00	14.00	18.00	22.25	15.00	4	4.00	16.00	4	3.50	14.00	22.00	0.56	172 LB
FCTB16X16	16.00	16.00	20.00	24.25	17.00	4	4.50	18.00	4	4.00	16.00	26.00	0.56	236 LB
FCTB18X18	18.00	18.00	22.00	26.25	18.00	4	5.00	20.00	4	4.50	18.00	28.00	0.56	270 LB
FCTB20X20	20.00	20.00	24.00	28.25	19.00	4	5.50	22.00	4	5.00	20.00	30.00	0.56	306 LB
FCTB22X22	22.00	22.00	26.00	30.25	21.00	4	6.00	24.00	4	5.50	22.00	34.00	0.56	362 LB
FCTB24X24	24.00	24.00	28.00	32.25	22.00	4	6.50	26.00	4	6.00	24.00	36.00	0.56	402 LB



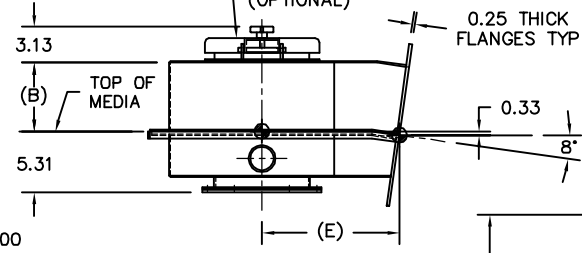
LEFT SIDE DISCHARGE SHOWN
(RIGHT SIDE ALSO AVAILABLE)



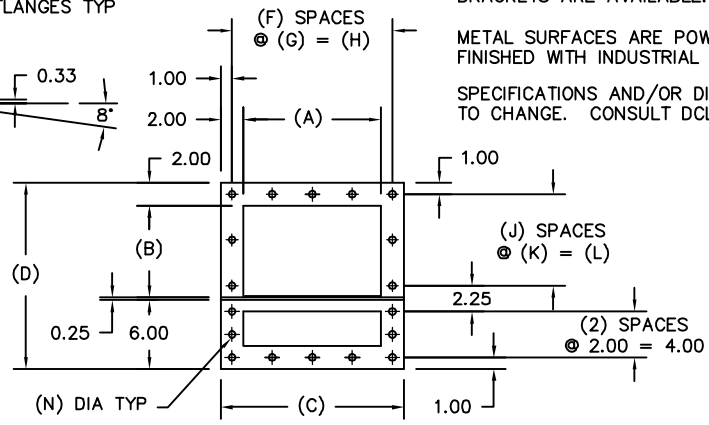
PRODUCT CHAMBER
INSPECTION PORT
SWING BOLT QUICK
RELEASE HATCH
(OPTIONAL)



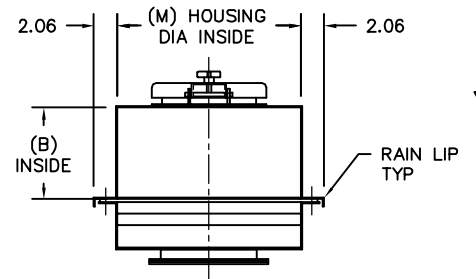
AIR CHAMBER ACCESS PORT
BOLTED HATCH COVER
(OPTIONAL)



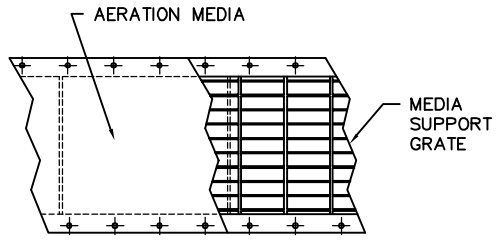
SECTION "A-A"
TYPICAL DISCHARGE



SECTION "B-B" TYPICAL FLANGE DETAIL



TYPICAL BODY SECTION



TYPICAL VIEW OF AIR CHAMBER

GENERAL NOTES:

PRODUCT AND AIR CHAMBER CONSTRUCTION IS 11 GA MILD STEEL. ABRASION RESISTANT OR STAINLESS STEEL CONSTRUCTION IS OPTIONAL.

ALL MATING FLANGES ARE 0.25 PLATE.

MEDIA SUPPORT IS 0.13 x 1.00 BAR GRATING WITH 1.00 CENTERS.

STANDARD AERATION MEDIA IS 0.25 NEEDED POLYESTER RATED AT 310° F MAXIMUM TEMPERATURE. OTHER MEDIA TYPES ARE OPTIONAL. STAINLESS STEEL MESH COVERING IS ALSO AVAILABLE.

STANDARD AIR INLET IS 2.00 NPT WITH A MANUAL BALANCE VALVE AS OPTIONAL. 3.00 & 4.00 INLETS, 150# FLANGES, AND BUTTERFLY VALVES ARE OPTIONAL.

NEOPRENE OR SILICONE GASKETS ARE AVAILABLE FOR ALL FLANGE CONNECTIONS. OTHER GASKET MATERIALS OPTIONAL. VENT CONNECTIONS, SIDE ACCESS PORTS, AND SUPPORT BRACKETS ARE AVAILABLE. CONSULT DCL FOR DETAILS.

METAL SURFACES ARE POWER TOOL CLEANED, PRIMED, AND FINISHED WITH INDUSTRIAL ENAMEL.

SPECIFICATIONS AND/OR DIMENSIONAL DATA ARE SUBJECT TO CHANGE. CONSULT DCL FOR CERTIFIED DRAWINGS.

REV	DATE	BY	DCL		SPECIALISTS IN ADVANCED DESIGN LOADING SYSTEMS		P.O. BOX 125 CHARLEVOIX, MICHIGAN 49720 (231) 547-5600	
			TOLERANCES UNLESS OTHERWISE SPECIFIED		DRAWN BY: TLC		SCALE: NONE	
			FRACTIONAL: 1/16"		CHECKED BY: ENG		DATE: 10-06-92	
			DECIMAL: .06					
			ANGULAR: 1/2°					
B	10-01-04	JNM	TITLE		DRAWING No:			
A	05-07-02	TLC	AERATION CONVEYOR TURNING BOX (HIGH TOP)		FCTB-10002			