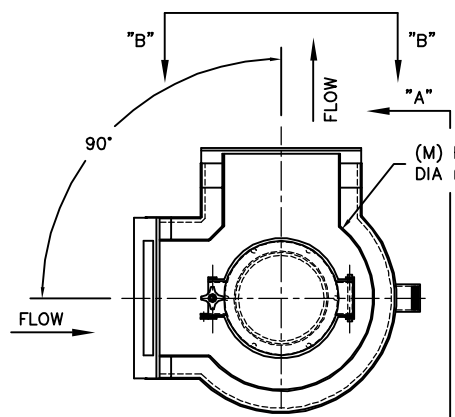
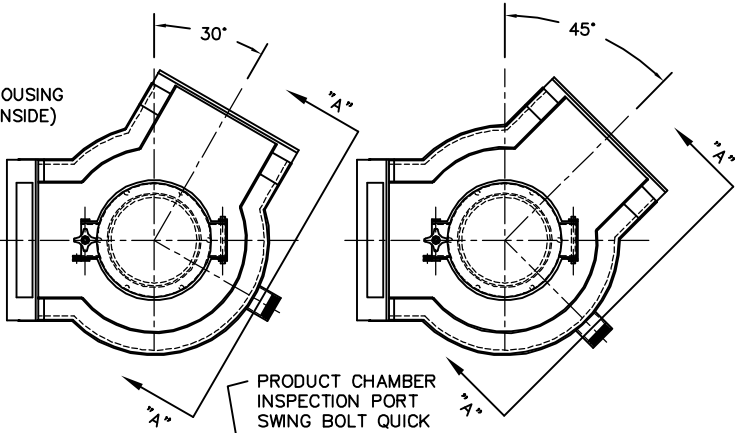


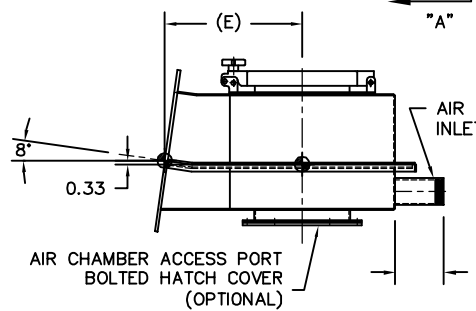
MODEL	A	B	C	D	E	F	G	H	J	K	L	M	N	EST WGT
FCTB6X4	6.00	4.00	10.00	12.25	10.00	2	4.00	8.00	1	4.00	4.00	12.00	0.56	73 LB
FCTB8X6	8.00	6.00	12.00	14.25	11.00	2	5.00	10.00	2	3.00	6.00	14.00	0.56	97 LB
FCTB10X6	10.00	6.00	14.00	14.25	12.00	3	4.00	12.00	2	3.00	6.00	16.00	0.56	110 LB
FCTB12X8	12.00	8.00	16.00	16.25	14.00	4	3.50	14.00	2	4.00	8.00	20.00	0.56	146 LB
FCTB14X8	14.00	8.00	18.00	16.25	15.00	4	4.00	16.00	2	4.00	8.00	22.00	0.56	166 LB
FCTB16X10	16.00	10.00	20.00	18.25	17.00	4	4.50	18.00	2	5.00	10.00	26.00	0.56	205 LB
FCTB18X10	18.00	10.00	22.00	18.25	18.00	4	5.00	20.00	2	5.00	10.00	28.00	0.56	228 LB
FCTB20X12	20.00	12.00	24.00	20.25	19.00	4	5.50	22.00	3	4.00	12.00	30.00	0.56	261 LB
FCTB22X12	22.00	12.00	26.00	20.25	21.00	4	6.00	24.00	3	4.00	12.00	34.00	0.56	300 LB
FCTB24X14	24.00	14.00	28.00	22.25	22.00	4	6.50	26.00	4	3.50	14.00	36.00	0.56	337 LB



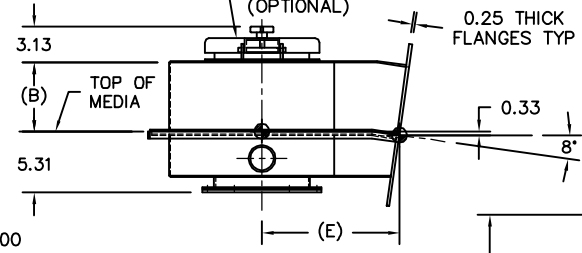
LEFT SIDE DISCHARGE SHOWN
(RIGHT SIDE ALSO AVAILABLE)



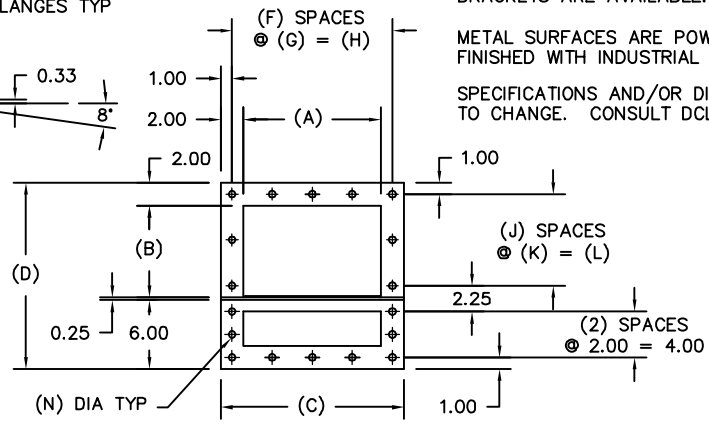
PRODUCT CHAMBER
INSPECTION PORT
SWING BOLT QUICK
RELEASE HATCH
(OPTIONAL)



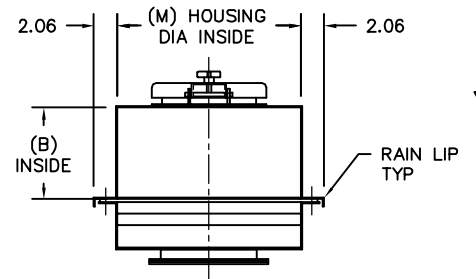
AIR CHAMBER ACCESS PORT
BOLTED HATCH COVER
(OPTIONAL)



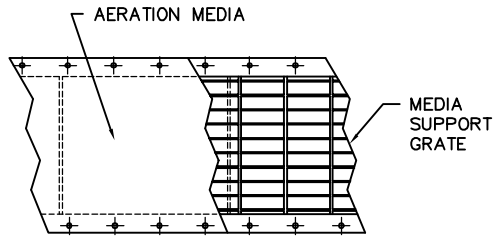
SECTION "A-A"
TYPICAL DISCHARGE



SECTION "B-B" TYPICAL FLANGE DETAIL



TYPICAL BODY SECTION



TYPICAL VIEW OF AIR CHAMBER

GENERAL NOTES:

PRODUCT AND AIR CHAMBER CONSTRUCTION IS 11 GA MILD STEEL. ABRASION RESISTANT OR STAINLESS STEEL CONSTRUCTION IS OPTIONAL.

ALL MATING FLANGES ARE 0.25 PLATE.

MEDIA SUPPORT IS 0.13 x 1.00 BAR GRATING WITH 1.00 CENTERS.

STANDARD AERATION MEDIA IS 0.25 NEEDED POLYESTER RATED AT 310° F MAXIMUM TEMPERATURE. OTHER MEDIA TYPES ARE OPTIONAL. STAINLESS STEEL MESH COVERING IS ALSO AVAILABLE.

STANDARD AIR INLET IS 2.00 NPT WITH A MANUAL BALANCE VALVE AS OPTIONAL. 3.00 & 4.00 INLETS, 150# FLANGES, AND BUTTERFLY VALVES ARE OPTIONAL.

NEOPRENE OR SILICONE GASKETS ARE AVAILABLE FOR ALL FLANGE CONNECTIONS. OTHER GASKET MATERIALS OPTIONAL.

VENT CONNECTIONS, SIDE ACCESS PORTS, AND SUPPORT BRACKETS ARE AVAILABLE. CONSULT DCL FOR DETAILS.

METAL SURFACES ARE POWER TOOL CLEANED, PRIMED, AND FINISHED WITH INDUSTRIAL ENAMEL.

SPECIFICATIONS AND/OR DIMENSIONAL DATA ARE SUBJECT TO CHANGE. CONSULT DCL FOR CERTIFIED DRAWINGS.

REV	DATE	BY	DCL		SPECIALISTS IN ADVANCED DESIGN LOADING SYSTEMS		P.O. BOX 125 CHARLEVOIX, MICHIGAN 49720 (231) 547-5600	
			TOLERANCES UNLESS OTHERWISE SPECIFIED		DRAWN BY: TLC		SCALE: NONE	
			FRACTIONAL: 1/16"		CHECKED BY: ENG		DATE: 10-06-92	
			DECIMAL: .06				DRAWING No: FCTB-10001	
			ANGULAR: 1/2°		TITLE: AERATION CONVEYOR TURNING BOX (LOW TOP)			
B	10-01-04	JNM						
A	05-07-02	TLC						