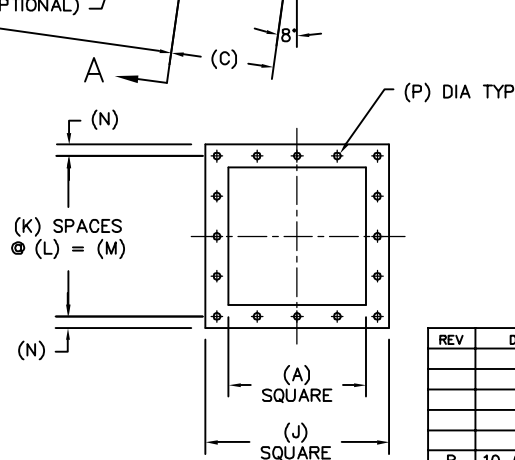
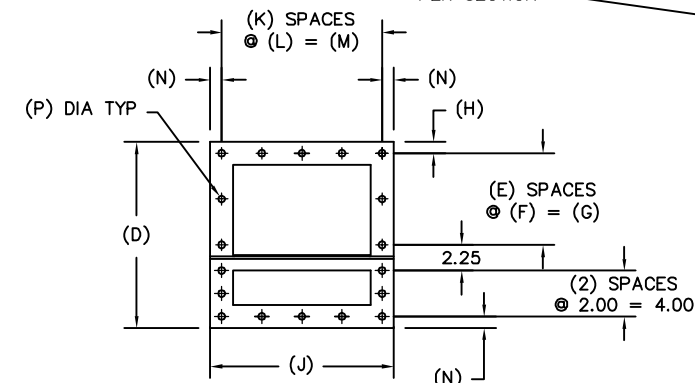
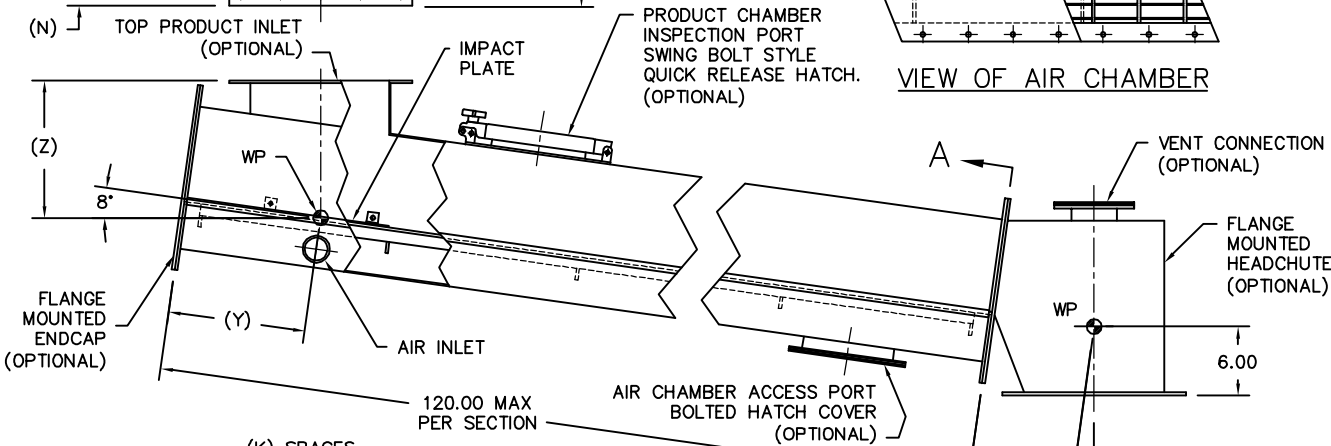
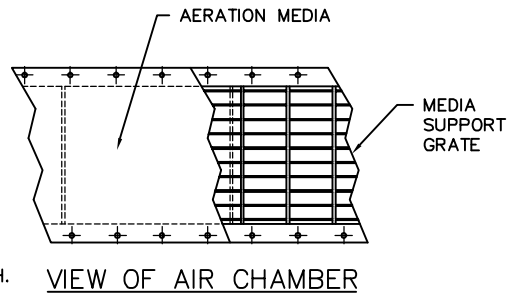
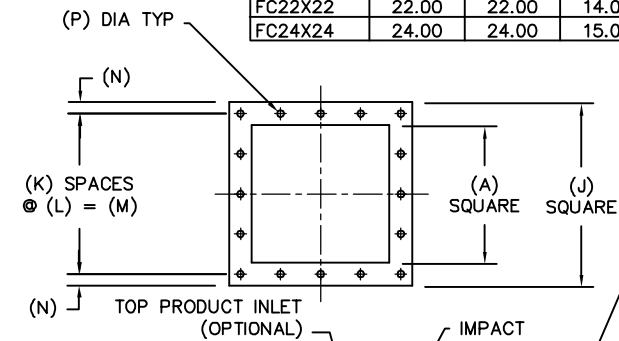


MODEL	A	B	C	D	E	F	G	H	J	K	L	M	N	P	Y	Z	WGT/FT
FC6X6	6.00	6.00	6.00	14.25	2	3.00	6.00	1.00	10.00	2	4.00	8.00	1.00	0.56	7.00	9.00	21 LB
FC8X8	8.00	8.00	7.00	16.25	2	4.00	8.00	1.00	12.00	2	5.00	10.00	1.00	0.56	8.00	11.00	26 LB
FC10X10	10.00	10.00	8.00	18.25	2	5.00	10.00	1.00	14.00	3	4.00	12.00	1.00	0.56	10.00	13.00	30 LB
FC12X12	12.00	12.00	9.00	20.25	3	4.00	12.00	1.00	16.00	4	3.50	14.00	1.00	0.56	12.00	16.00	35 LB
FC14X14	14.00	14.00	10.00	22.25	4	3.50	14.00	1.00	18.00	4	4.00	16.00	1.00	0.56	13.00	18.00	39 LB
FC16X16	16.00	16.00	11.00	24.25	4	4.00	16.00	1.00	20.00	4	4.50	18.00	1.00	0.56	14.00	20.00	44 LB
FC18X18	18.00	18.00	12.00	26.25	4	4.50	18.00	1.00	22.00	4	5.00	20.00	1.00	0.56	15.00	22.00	48 LB
FC20X20	20.00	20.00	13.00	28.25	4	5.00	20.00	1.00	24.00	4	5.50	22.00	1.00	0.56	17.00	25.00	53 LB
FC22X22	22.00	22.00	14.00	30.25	4	5.50	22.00	1.00	26.00	4	6.00	24.00	1.00	0.56	18.00	27.00	57 LB
FC24X24	24.00	24.00	15.00	32.25	4	6.00	24.00	1.00	28.00	4	6.50	26.00	1.00	0.56	19.00	29.00	62 LB



GENERAL NOTES:

PRODUCT AND AIR CHAMBER CONSTRUCTION IS 11 GA MILD STEEL. ABRASION RESISTANT OR STAINLESS STEEL CONSTRUCTION IS OPTIONAL.

ALL MATING FLANGES ARE 0.25 PLATE.

MEDIA SUPPORT IS 0.13 x 1.00 BAR GRATING WITH 1.00 CENTERS.

STANDARD AERATION MEDIA IS 0.25 NEEDLED POLYESTER RATED AT 310° F MAXIMUM TEMPERATURE. OTHER MEDIA TYPES ARE OPTIONAL. STAINLESS STEEL MESH COVERING IS ALSO AVAILABLE.

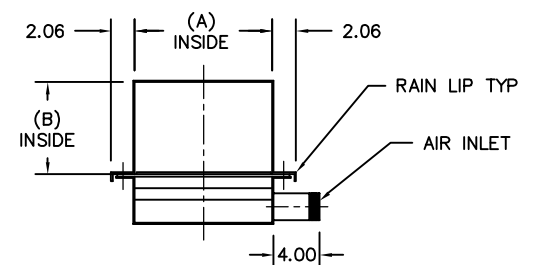
STANDARD AIR INLET IS 2.00 NPT WITH A MANUAL BALANCE VALVE AS OPTIONAL. 3.00 & 4.00 INLETS, 150# FLANGES, AND BUTTERFLY VALVES ARE OPTIONAL.

NEOPRENE OR SILICONE GASKETS ARE AVAILABLE FOR ALL FLANGE CONNECTIONS. OTHER GASKET MATERIALS OPTIONAL.

ROUND OR RECTANGULAR PRODUCT INLETS AND OUTLETS ARE AVAILABLE. SPECIAL BOLT PATTERNS ARE OPTIONAL.

METAL SURFACES ARE POWER TOOL CLEANED, PRIMED, AND FINISHED WITH INDUSTRIAL ENAMEL.

SPECIFICATIONS AND/OR DIMENSIONAL DATA ARE SUBJECT TO CHANGE. CONSULT DCL FOR CERTIFIED DRAWINGS.



TYPICAL CONVEYOR BODY SECTION

REV	DATE	BY	DCL		SPECIALISTS IN ADVANCED DESIGN LOADING SYSTEMS		P.O. BOX 125 CHARLEVOIX, MICHIGAN 49720 (231) 547-5600	
			TOLERANCES UNLESS OTHERWISE SPECIFIED		DRAWN BY: TLC		SCALE: NONE	
			FRACTIONAL: 1/16" DECIMAL: .06 ANGULAR: 1/2		CHECKED BY: ENG		DATE: 10-06-92	
B	10-01-04	JNM	TITLE		FC AERATION CONVEYOR (HIGH TOP)		DRAWING No: FC-10002	
A	04-18-02	TLC						

SECTION A-A TYPICAL FLANGE DETAIL