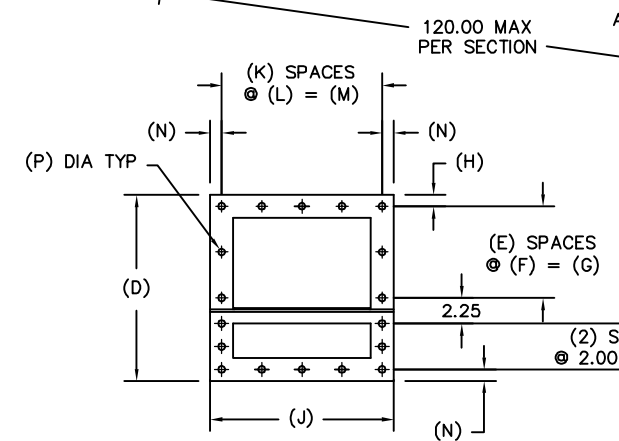
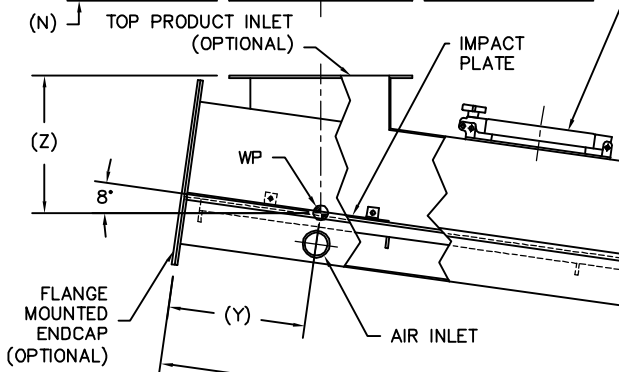
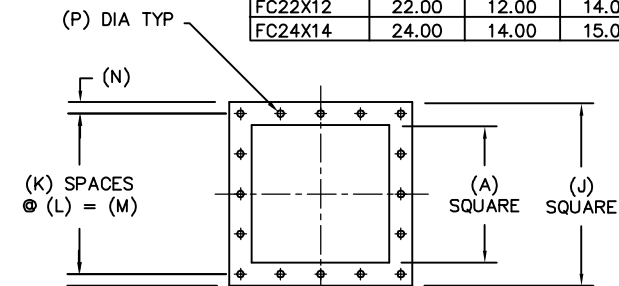
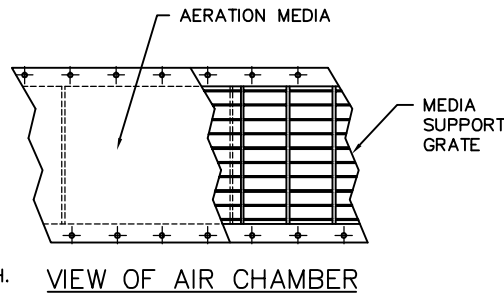


MODEL	A	B	C	D	E	F	G	H	J	K	L	M	N	P	Y	Z	WGT/FT
FC6X4	6.00	4.00	6.00	12.25	1	4.00	4.00	1.00	10.00	2	4.00	8.00	1.00	0.56	7.00	7.00	20 LB
FC8X6	8.00	6.00	7.00	14.25	2	3.00	6.00	1.00	12.00	2	5.00	10.00	1.00	0.56	8.00	9.00	24 LB
FC10X6	10.00	6.00	8.00	14.25	2	3.00	6.00	1.00	14.00	3	4.00	12.00	1.00	0.56	10.00	9.00	27 LB
FC12X8	12.00	8.00	9.00	16.25	2	4.00	8.00	1.00	16.00	4	3.50	14.00	1.00	0.56	12.00	12.00	32 LB
FC14X8	14.00	8.00	10.00	16.25	2	4.00	8.00	1.00	18.00	4	4.00	16.00	1.00	0.56	13.00	12.00	34 LB
FC16X10	16.00	10.00	11.00	18.25	2	5.00	10.00	1.00	20.00	4	4.50	18.00	1.00	0.56	14.00	14.00	39 LB
FC18X10	18.00	10.00	12.00	18.25	2	5.00	10.00	1.00	22.00	4	5.00	20.00	1.00	0.56	15.00	14.00	42 LB
FC20X12	20.00	12.00	13.00	20.25	3	4.00	12.00	1.00	24.00	4	5.50	22.00	1.00	0.56	17.00	16.00	46 LB
FC22X12	22.00	12.00	14.00	20.25	3	4.00	12.00	1.00	26.00	4	6.00	24.00	1.00	0.56	18.00	16.00	49 LB
FC24X14	24.00	14.00	15.00	22.25	4	3.50	14.00	1.00	28.00	4	6.50	26.00	1.00	0.56	19.00	18.00	53 LB



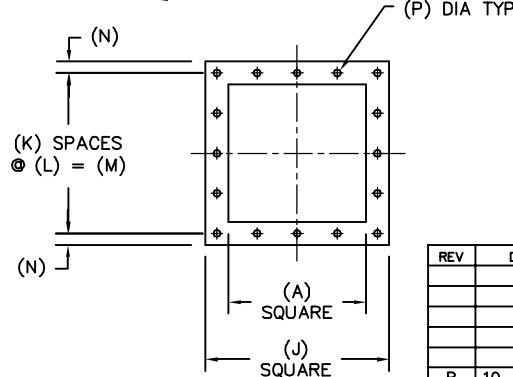
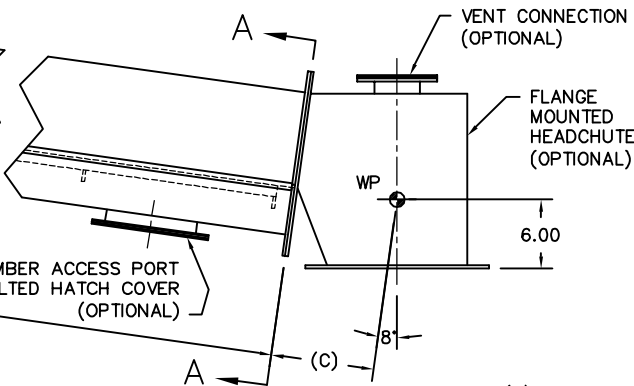
SECTION A-A
TYPICAL FLANGE DETAIL



PRODUCT CHAMBER
INSPECTION PORT
SWING BOLT STYLE
QUICK RELEASE HATCH.
(OPTIONAL)

VIEW OF AIR CHAMBER

120.00 MAX
PER SECTION
AIR CHAMBER ACCESS PORT
BOLTED HATCH COVER
(OPTIONAL)



GENERAL NOTES:

PRODUCT AND AIR CHAMBER CONSTRUCTION IS 11 GA MILD STEEL. ABRASION RESISTANT OR STAINLESS STEEL CONSTRUCTION IS OPTIONAL.

ALL MATING FLANGES ARE 0.25 PLATE.

MEDIA SUPPORT IS 0.13 x 1.00 BAR GRATING WITH 1.00 CENTERS.

STANDARD AERATION MEDIA IS 0.25 NEEDED POLYESTER RATED AT 310° F MAXIMUM TEMPERATURE. OTHER MEDIA TYPES ARE OPTIONAL. STAINLESS STEEL MESH COVERING IS ALSO AVAILABLE.

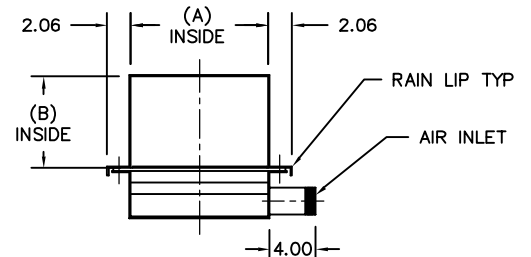
STANDARD AIR INLET IS 2.00 NPT WITH A MANUAL BALANCE VALVE AS OPTIONAL. 3.00 & 4.00 INLETS, 150# FLANGES, AND BUTTERFLY VALVES ARE OPTIONAL.

NEOPRENE OR SILICONE GASKETS ARE AVAILABLE FOR ALL FLANGE CONNECTIONS. OTHER GASKET MATERIALS OPTIONAL.

ROUND OR RECTANGULAR PRODUCT INLETS AND OUTLETS ARE AVAILABLE. SPECIAL BOLT PATTERNS ARE OPTIONAL.

METAL SURFACES ARE POWER TOOL CLEANED, PRIMED, AND FINISHED WITH INDUSTRIAL ENAMEL.

SPECIFICATIONS AND/OR DIMENSIONAL DATA ARE SUBJECT TO CHANGE. CONSULT DCL FOR CERTIFIED DRAWINGS.



TYPICAL CONVEYOR
BODY SECTION

REV	DATE	BY	DCL		SPECIALISTS IN ADVANCED DESIGN LOADING SYSTEMS		P.O. BOX 125 CHARLEVOIX, MICHIGAN 49720 (231) 547-5600	
			TOLERANCES UNLESS OTHERWISE SPECIFIED		DRAWN BY: TLC		SCALE: NONE	
			FRACTIONAL: 1/16"		CHECKED BY: ENG		DATE: 10-06-92	
B	10-01-04	JNM	TITLE		FC AERATION CONVEYOR (LOW TOP)		DRAWING No:	
A	04-18-02	TLC					FC-10001	