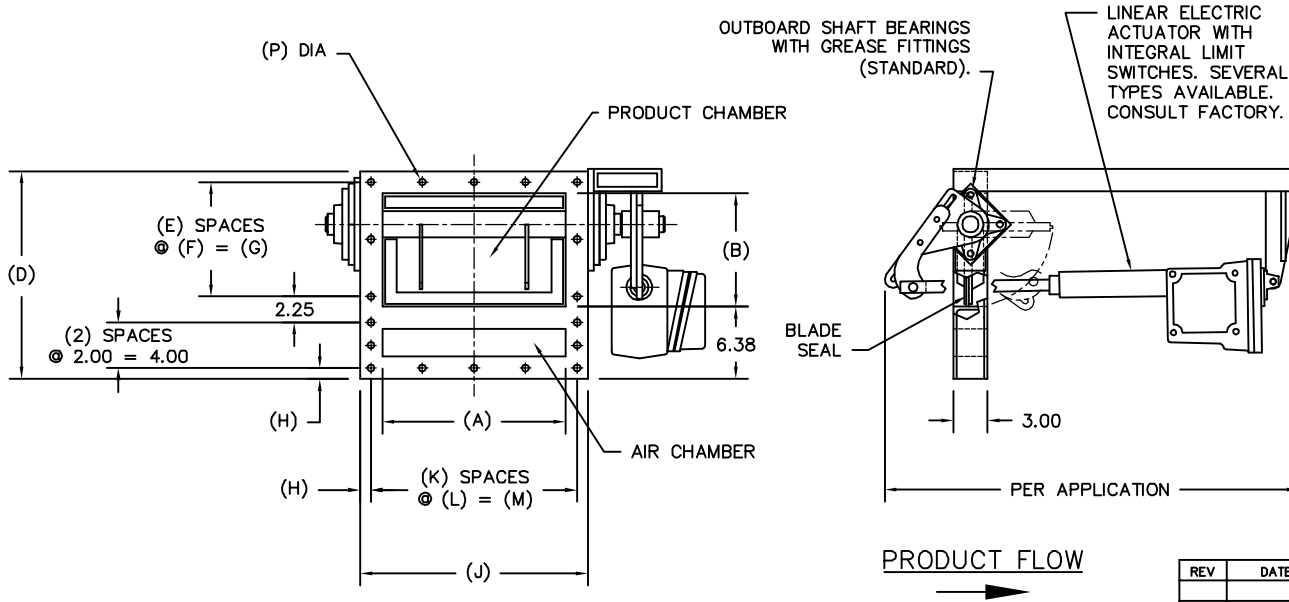


MODEL	A	B	D	E	F	G	H	J	K	L	M	P	EST WGT
FBVE6X4	6.00	4.00	12.25	1	4.00	4.00	1.00	10.00	2	4.00	8.00	0.56	103 LB*
FBVE8X6	8.00	6.00	14.25	2	3.00	6.00	1.00	12.00	2	5.00	10.00	0.56	118 LB*
FBVE10X6	10.00	6.00	14.25	2	3.00	6.00	1.00	14.00	3	4.00	12.00	0.56	125 LB*
FBVE12X8	12.00	8.00	16.25	2	4.00	8.00	1.00	16.00	4	3.50	14.00	0.56	163 LB*
FBVE14X8	14.00	8.00	16.25	2	4.00	8.00	1.00	18.00	4	4.00	16.00	0.56	178 LB*
FBVE16X10	16.00	10.00	18.25	2	5.00	10.00	1.00	20.00	4	4.50	18.00	0.56	198 LB*
FBVE18X10	18.00	10.00	18.25	2	5.00	10.00	1.00	22.00	4	5.00	20.00	0.56	202 LB*
FBVE20X12	20.00	12.00	20.25	3	4.00	12.00	1.00	24.00	4	5.50	22.00	0.56	222 LB*
FBVE22X12	22.00	12.00	20.25	3	4.00	12.00	1.00	26.00	4	6.00	24.00	0.56	245 LB*
FBVE24X14	24.00	14.00	22.25	4	3.50	14.00	1.00	28.00	4	6.50	26.00	0.56	260 LB*
FBVE6X6	6.00	6.00	14.25	2	3.00	6.00	1.00	10.00	2	4.00	8.00	0.56	103 LB*
FBVE8X8	8.00	8.00	16.25	2	4.00	8.00	1.00	12.00	2	5.00	10.00	0.56	118 LB*
FBVE10X10	10.00	10.00	18.25	2	5.00	10.00	1.00	14.00	3	4.00	12.00	0.56	125 LB*
FBVE12X12	12.00	12.00	20.25	3	4.00	12.00	1.00	16.00	4	3.50	14.00	0.56	170 LB*
FBVE14X14	14.00	14.00	22.25	4	3.50	14.00	1.00	18.00	4	4.00	16.00	0.56	194 LB*
FBVE16X16	16.00	16.00	24.25	4	4.00	16.00	1.00	20.00	4	4.50	18.00	0.56	200 LB*
FBVE18X18	18.00	18.00	26.25	4	4.50	18.00	1.00	22.00	4	5.00	20.00	0.56	222 LB*
FBVE20X20	20.00	20.00	28.25	4	5.00	20.00	1.00	24.00	4	5.50	22.00	0.56	237 LB*
FBVE22X22	22.00	22.00	30.25	4	5.50	22.00	1.00	26.00	4	6.00	24.00	0.56	260 LB*
FBVE24X24	24.00	24.00	32.25	4	6.00	24.00	1.00	28.00	4	6.50	26.00	0.56	275 LB*



**GENERAL NOTES:**

FRAME CONSTRUCTION IS 0.19 FORMED PLATE.  
STAINLESS STEEL CONSTRUCTION IS OPTIONAL.

VALVE BLADE CONSTRUCTION IS 0.25 MILD STEEL.  
ABRASION RESISTANT OR STAINLESS STEEL IS OPTIONAL.

AVAILABLE BLADE SEALS ARE URETHANE, SILICONE, VITON,  
OR HIGH-TEMPERATURE RUBBER BELTING.  
OTHER MATERIALS ARE AVAILABLE UPON REQUEST.

METAL SURFACES ARE POWER TOOL CLEANED, PRIMED,  
AND FINISHED WITH INDUSTRIAL ENAMEL.

ELECTRIC ACTUATOR WITH INTEGRAL LIMIT SWITCHES  
AVAILABLE IN NEMA 4, 4X, 7, AND 9.

BORE SIZE AND LENGTH OF ACTUATOR TO BE DETERMINED  
UPON APPLICATION.

SPECIFICATIONS AND/OR DIMENSIONAL DATA ARE SUBJECT  
TO CHANGE. CONSULT DCL FOR CERTIFIED DRAWINGS.

C/F = CONSULT FACTORY

\*ESTIMATED WEIGHTS DO NOT INCLUDE ACTUATOR OR  
ELECTRICAL COMPONENTS.

REV	DATE	BY	DCL		SPECIALISTS IN ADVANCED DESIGN LOADING SYSTEMS		P.O. BOX 125 CHARLEVOIX, MICHIGAN 49720 (231) 547-5600	
			TOLERANCES UNLESS OTHERWISE SPECIFIED		DRAWN BY:		SCALE: NONE	
			FRACTIONAL: 1/16" DECIMAL: .06 ANGULAR: 1/2		CHECKED BY: ENG		DATE: 10-06-92	
TITLE			FBV BUTTERFLY VALVE (ELECTRIC)				DRAWING No: FBVE-10001	
A	03-21-02	TLC						